



300 copies delivered free every quarter!

Naseby Natters

issue 13



NATTERS GROWS!



This issue is packed to bursting point (quite literally) with articles, so we have had to expand this issue from 20 pages to 24 simply so as we could fit it all in!! With a huge thanks to all the teams efforts this edition we hope this will be the best one yet!

A BLESSING OR A SHAME? This time last year we were reporting on the mess and wonderment that the thousands of starlings brought to the village (was it really that long ago?). However this year we seem to have been 'missed off' their migration path! Whether you are relieved or saddened they're spectacular air acrobatics will certainly be missed. So what do we have in store this edition....

ALL THE USUAL SUSPECTS: We have all the regular features and more from the clubs, societies, public bodies and organisations in and around Naseby.

TOPICAL ARTICLES: We have information on law changes regarding the use of mobile phones and the possible new road charge plan the government may introduce.

ALL NEW KIDS CORNER: The Kids Corner on the back page is now solely created and supplied by the children at Naseby Primary School, which is fantastic! A **big thank you** goes out to them for putting it together!

STILL CALLING ALL FARMERS: Our plan to have a new farm article each issue giving an insight into what sort of farming is done around the village is proving hard work! We have articles in the pipe line for Lambing and Beef but we really want to hear from all the different sorts of farming done around Naseby - especially arable farming! So please get in touch. We have a mini-update in this issue but hope to have some big features in the next edition.

NEXT ISSUE: This may be delayed as the editor will have had her second baby by then (at the time of going to press there was still no news!) so the logistics of producing the newsletter may be disrupted somewhat!

Happy Reading and a Happy Easter to one and all!

THE NEWSLETTER TEAM

Deadline

The deadline for the possible next issue is the **1st of May 2007**

What's Inside

- The Village Update
- Community Information
- Naseby Weather
- Naseby Churches
- Naseby School & NSA
- Reduced Rail Services
- A Bit About Sponsors
- Naseby Shop Update
- Village Hall & Sports Court
- Age Concern
- Village Design Statement
- Mini Farm Update
- A Chat with...
- Mobile Phone Law Changes
- What's in a Name?
- Can we talk to...
- Road Charge Plan
- Any newz on Naseby?
- Marie Curie Run
- Joshua Foundation Update
- Fat Trap!
- Womens Rounders Team
- Mac Users Club
- Battlefield update
- Gardening Tips
- Naseby Historical Society
- Neighbourhood Watch News
- Gardening Club
- Safety Tips for all
- Business Directory & Groups
- The WI
- Kids Corner!
- The Next Issue....?

John Anderson
History/General
01604 743141
johns.anderson@virgin.net

Pat Reedman
Interviews
01604 743830
patreedman@hotmail.com

Sandra & Wyn Sleeman
Enviromental Issues
01604 740363
everyone@sleeman.plus.com

Pat Yates
Old Naseby
01604 740657
not on e-mail...yet!

Sally Field
General (+ deputy editor!)
01604 740608
sallyfield@gmail.com

Katie Shepperd
General
01604 743536
e-mail TBC

Shirley Engler
Farm Articles
01604 743560
shirloueng@aol.com

Amanda Green
Editor
01604 743765
aj@ajdesign.biz



your newsletter and your village - so get involved



Village Update

Naseby Parish Council

THE PAST...

The Parish Plan is being reviewed to ensure that nothing has been overlooked and that everything that the Council can do has been implemented.



THE FUTURE...

The Council wants to actively engage with parishioners and to hear your ideas and priorities for things that we can do to make Naseby better.

Some suggestions are:

- surfacing the Village Hall car park
- lighting up All Saint's Church
- upgrading the playground
- new street signs that highlight Naseby's historical importance

If you love these ideas or hate them - please let us know!

We want to know what your priorities are and to hear any better ideas that you might have.

Every house will shortly receive a questionnaire and we urge you to respond.

ROADS

The Parish Council regularly reports potholes, blocked drains and other road problems to Atkins on your behalf. The service provided by Atkins is generally agreed to be woeful and response times to problems slow. We have raised these issues with the Leader of the County Council, Jim Harker, and

hope that our comments are taken into consideration in the negotiation for the new county roads contract.

ROAD PROBLEMS? REPORT IT!

If you notice a problem on the roads please tell the Clerk or report it directly to Atkins via the 'Street Doctor' service. The more complaints they get the sooner they will fix our problems hopefully!!!

STREET DOCTOR
tel: 0845 601 1113

e-mail:

streetdoctor@northamptonshire.gov.uk

LITTER

The windy weather has caused litter problems on refuse collection days. You can obtain lids for your recycling boxes and extra recycling boxes from Daventry District Council by calling the 'One Stop Shop' on 01327 300001.

PLANNING APPEAL

We reported last time that permission for a new house opposite the war memorial had been refused by the District Council. The applicant has appealed against that decision and the Council have made representations to the Inspector concerning the narrowness of School Lane and the importance of the open space to the village.

GRIT BINS

Fairfax Rise and Bakehouse Rise are treacherous in the icy weather. We would like to provide grit bins but there are no obvious places to put them. If you have a suggestion please let a Councillor know.

Tom Westaway
Chairman
Naseby Parish Council

Members of the Parish Council 2007

Mrs Avis Aldrich
18, Nutcote



Mrs Bridget Baker
Carvells Home Farm,
Carvells lane

Mr Melfyn Hoyle
14, Nutcote

Mrs Becky Pope
'Aysgarth', High Street
(Vice Chairman)

Greg Pritchett
Oakwell, Church St

Paul Reedman
Hall Close

Mr Scott Westaway
New Hall, Newlands

Mr Tom Westaway
'Westfields', Carvells Lane
(Chairman)

Clerk - Pauline Vann
Manor House, Newlands

BIT OF FUN...

Ode to Spell Check:

Eye halve a spelling chequer
It came with my pea sea
It plainly marques four my revue
Miss steaks eye kin knot sea.

Eye strike a key and type a word
And weight four it two say
Weather eye am wrong oar write
It shows me strait a weigh.

As soon as a mist ache is maid
It nose bee fore two long
And eye can put the error rite
Its rare lea ever wrong.

Eye have run this poem threw it
I am shore your pleased two no
Its letter perfect awl the weigh
My chequer tolled me sew.

Sauce Unknown



Village Fairies?

Severe Weather Storm

On Thursday the 18th January, Naseby along with the rest of Europe experienced the most severe storms since 1990. I'm pleased to say that in Naseby there have been no reported injuries although trees were uprooted (see page 10) and there was the now customary power failure.

It can't have been much fun for the refuse collection teams battling through severe gale force conditions with our blue bins!

As you might expect the debris was everywhere at the end of the day...but then, something



unexpected happened...Saturday morning came and the whole village was spotless - It could have been the elves and fairies rumoured to be living in nearby woodlands (known to be meticulous) - or it could have been those hardy Naseby residents - thanks from the Natters team and villagers, you know who you are!!!

Phil Lewis



POLITE NOTICE: When it's windy please use the lids on recycle boxes and think about putting lighter items at the bottom to help stop them blowing around the village

Naseby Weather



MEASURED IN BAKEHOUSE RISE COURTESY OF STUART CATO

Month 2006/7	NOV	DEC	JAN
Max Temp °C	14.2	12.8	12.1
Av Max Temp °C	10.6	8.2	8.9
Min Temp °C	-0.1	-2.4	-2.1
Av Min Temp °C	4.8	3.7	4.0
Min Wind Chill °C	-2.7	-4.0	-5.9
Max Humidity %RH	93	95	93
Av Max Humidity %RH	90.7	91.9	91.1
Min Humidity %RH	32	71	60
Av Min Humidity %RH	70.2	84.9	76.7
Max Wind mph	13.1	17.4	23.2
Av Max Wind mph	8.6	9.8	12.2
Max Wind Gusts mph	31.0	36.6	51.0
Av Wind Gusts mph	18.8	19.5	25.7
Comparison vs			
Previous year 05-06	NOV	DEC	JAN
Max Temp °C	16.3	9.9	10.6
Av Max Temp °C	8.6	6.5	5.9
Min Temp °C	-2.6	-3.8	-3.0
+3.0 °C on Ave!			

CHIPS, FISH & CHIPS NIGHT!



Its chips with everything at the Village Hall on 24th February 2007!

Why not try your luck at Blackjack and Roulette?

Entry £10 which includes Fish, Chips & chips!

There will be a bar, and prizes for whoever can accumulate the biggest stash!

Get your tickets from Naseby HQ or Becky Pope 01604 743213

Over 18's Only

All proceeds to Village Hall Funds

4 Goldfish & large tank free to a good home!

Call Bridget Baker 01604 740007



Congrats to Liz Crowley & Russell on their recent marriage!

HALLOWEEN 2006



Apologies for this not making the last edition of Natters - we completely ran out of space! Big thanks go to Ian A nott for supplying the scary photo!





All Saints Church



If you would like an Easter Lily in memory of a loved one, to be part of the Easter flowers arrangements, please would you contact Avis or Jan.

Do you enjoy flower arranging? Would you like to be on our flowers rota or maybe just occasionally arrange the flowers? If the answer to any of these is YES Avis or Jan would be delighted to hear from you.

Volunteer Cleaners Needed! We are also looking for volunteers to clean the church brasses. The more volunteers the less often you would be on the rota !!

- Mothering Sunday - 18th March 9.30am NASEBY
 - Palm Sunday - 1st April 9.30am NASEBY
- HOLY WEEK:-**
- Monday 2nd April - 7.30pm Kelmars
 - Tuesday 3rd April - 7.30pm Clipston
 - Wednesday 4th April - 10am NASEBY followed by Coffee
 - Maundy Thursday 5th April 8.30pm Clipston
 - Good Friday 6th April 10am - NASEBY Stations of the Cross followed by Hot Cross Buns & Coffee
 - Good Friday - 2pm Clipston - Hour of Devotion
 - Saturday 7th April - Easter Eve - 7.30pm Clipston Service of Light
 - Easter Day - 9.30am NASEBY

Details of other services on church notice board.

Easter Blessings to you all
Jan Hillyer and Avis Aldrich

Naseby Methodist Church



We're often told not to look back, but once I heard someone say "God gave us memories so we can have roses in winter...." so here we go: The chapel was well-used round the Christmas period:

Were you there when the chapel roof was raised by the school play? What a splendid performance!

And to see and hear the creation story re-told and sung by the little ones using multi-media was amazing too: 'Everyday is a new beginning!' So true for us today!

The singing in both plays was so good I think they could easily take part in the BBC choir of the year competition!



Thank you to the school for keeping Jesus at the heart of Christmas!

John Harris had the little ones at Mums & Tots re-tell the story of Jesus with help of the flannel board, and of course Santa put in an appearance. Dec 17th was a 'marathon' for many parents: running to Sunday School, the Panto & the Carol Service! Thanks for making the effort though, you helped to make the Carol Service a great time! You deserve a medal! The message of Christmas on both Carol Service & Christmas Day was that God comes where we don't expect him, and not at all how we think he should!

That's something to mull over isn't it? Another question is of course:

Does God feature in our thinking at all?

And what do you think He is like?

Those are the sort of things we discuss in our services and weekly home group. If you are at all curious about what Christians believe, why not come along?

It seems strange to think about Easter in January, [did you smell the hot cross buns in Sainsburys?] but it won't be long until it's April!

SPECIAL TIMES:

Mothering Sunday is March 18th and I can promise a different time

Contacts

Rector:
Revd David Faulks
Tel: 01858 525342

Church Wardens:
Avis Aldrich
Tel: 01604 740532

Jan Hillyer
Tel: 01604 740662

Treasurer:
Mike Hopkins
Tel: 01604 740309





of worship....with Kim Shorley & Jane Gaffney leading us! So why not put it in your diary: March 18 at 10.45 Mothers Day Family Time!

24/7 Time to chill: Friday April 20. After the lambing, the Easter school holiday, why not **take time out to just BE**. As usual, you can book a slot, one or two hours, as many as you like - or need - and relax in the 'Quiet Corner'. **Meditate**, in silence, to quiet music, read what's on the wall or pick up the Word on the Street, have hot chocolate & cream, coffee or tea and relax...you will be so refreshed it will surprise you. We hope to put a list on the Chapel notice board where you can sign up, but both Ruth Watson and I will have lists too. So why not give us a ring: Leny 743166, Ruth 740845.



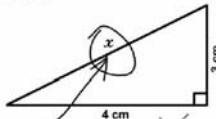
TEXT-A-PRAYER

If you want us to pray for you please text your request to 07766 663799 or leave a message on the voicemail. The prayer request will go round the prayer chain. It will be anonymous, but of course it is always possible to ask for a visit by the minister or one of us. So don't be shy and start this adventure with God...you never know.....

- FUSION Dates:
Feb 22nd and March 29th
- SUNDAY SCHOOL Dates :
Feb 25th and March 25th
- MOTHERING SUNDAY Family
Time: March 18th at 10.45am
- EASTER DAY Service Family
Time: April 8th at 10.45am

Finally for all who are preparing for exams later this year, here's a tip:

3. Find x .



Here it is $\times 0$

Circle Trainers - by Wade Clarke ©2009

Leny Cato

Contacts

Minister: Rev John Harris
30 Fardale View Market Harborough (01858 462889)

Bookings Secretary: Ruth Watson (01604 740845)

Secretary: Leny Cato (01604 743166)

www.harboroughmethodistcircuit.org.uk/Naseby.html

Fancy Dress Success!



The fancy dress horse parade was joined in by 18 horses and ponies with riders of all ages dressed up in everything from snowmen to indians and cowboys to little princesses! Overall the day was a complete success and we raised a total of £136.00 for Riding For The Disabled. FAB!!!



Thank you to everyone who donated the money and of course those who took part. Thanks to Pauline, Debbie, Grant and Andrew who judged the fancy dress. The winners were:

- Molly Baker & Peppermint - Red Indian
- George Tebbut & Sunny D - A Knight & His Steed
- Thomas & Rebecca Marshall & Teddy - The Karate Kids

Thank you to Nellie and Vicky for being Father Christmas' reindeer and wife. Thank you to Alan Hamp for all your help on the day (the jobs yours!) Thanks again Vicky for organising everything. Look out for us next year! Details will be posted nearer the time!

Bridget Baker





Naseby School Update:



I know it seems ages ago, but Christmas at school was great fun! The infant children performed a super play called 'The Creation'. All the Y2's sang a solo and every child took part. They performed to a full house at the Chapel. The Juniors performed 'Witnesses'. This told the Christmas story as witnessed by the shepherds, angels etc. There were some technically tricky songs in this, which the children performed fabulously to two full houses at the Chapel! The Carol Service was held at All Saints and this year, for the first time, the whole of the Christmas story was told in song. Children at Naseby love singing so we do it whenever we can!

We are very grateful to the NSA, who paid for all the children to go to the Odeon Cinema, Kettering, at the end of term. We had our own private showing in one of the small cinemas and were thoroughly well entertained by 'Happy Feet'.

Last term, the Year 5&6 children entered a Film Competition between other Guilsborough cluster schools. Judgement Day was in November and participating children and parents went along to Guilsborough school one evening to view the competition. You probably heard from here the Naseby cheer that went up when the winners were announced -

Naseby first, Clipston second. Well done to all the children involved and thanks to Mrs Thornton and Mrs Blake.

Again in November, we took part in 'Operation Christmas Child', which is run by the Samaritan's Purse. The children come back to school in the evening and have great fun filling shoe boxes with gifts for underprivileged children in other countries (last year our boxes went to Belarus). This year we reached the grand total of 81 boxes, which is a fantastic achievement.

Future events this term include a visit from a drums workshop for the whole school - noisy but fun! KS2 children will be attending a Candlemas Service at St Matthews Church in Northampton at the beginning of February and will be going to The Dergate to see The Tempest which has been adapted especially for children. Watch out for the Life Education Bus parked outside the school in March. We invite this bus to visit each year so that we can take part

in the super programme of PSHE it offers.

And finally, a great piece of news. After many years of saving money and making plans, building work will start at the back of the school at half term. Our old, fragrant toilets and library will be demolished and a larger block built on the same site. We're really looking forward to the project's completion and I hope that there will not be too much disruption for our neighbours.

Sue Bradburn



School Contacts

Head Teacher:
Mrs Sue Bradburn BSc
head@naseby-ce.northants-ecf.gov.uk
Tel: 01604 740540

List of Governors
Ian Arnott (Community), Joanne Clement (Parent), Rev D Faulks (Ex Officio), Sandra Kirkland (Associate Member), Valerie Latham (Foundation), Paula Otter (Parent), James Pope (Parent & Vice Chair), Peter Sainsbury (LEA & Chair), Amanda Smith (Parent), Beverley Thornton (Teacher), Mrs P Yates (LEA), Andrea Heydon (Clerk)

NSA UPDATE

Naseby School Association

After a very successful Christmas Fair the NSA members had a most deserved "break" over Christmas. The new year and a start date for the school extension has brought new vigour to our planning for 2007.

So please put the following dates in your diaries for 2007 so you can join in the fun and support us...

- **25th May** - Children's Clothing Fashion Show

- **22nd June** - Annual Hog/Lamb Roast with music from Empire
- **12th October** - Quiz Night
- ...plus the Christmas Fair (date to be decided)

THE SPORTS CLUB: This will be restarting after February half term and is held in the village hall on Fridays after school. This is open to all primary school aged children whether or not they attend Naseby School.

Becky Pope - Secretary





Fears For Reduced Rail Services To London!

Harborough Rail Users



Harborough Rail Users (HRU) have been campaigning to save the off-peak and weekend rail services to Market Harborough which are at risk as companies bid for the new franchise.

As part of this campaign, the Group held meetings with all four potential bidders. In addition, a

petition signed by over 2,000 will be handed over to Harborough MP Edward Garnier on Friday 16th February. Mr Garnier will submit the petition to Parliament.

Once the preferred bidder is announced, which is likely during the Spring and Summer; a new phase of the campaign will be required. The aim of this phase

WHILE PEAK-HOUR SERVICES COULD BE UNAFFECTED... OFF-PEAK SERVICES DURING THE DAY AND AT WEEKENDS COULD BE HALVED FROM TWO EVERY HOUR TO JUST ONE!

will be to influence the detailed negotiations between the bidder and the Department for

Transport, before the completion of the franchise contract.



Even after this stage, the current timetable will be in place for one year. If the group has not succeeded in getting the plans amended, we will still have time to lobby the new franchisee not to implement the proposed cuts. **WANT TO SHOW YOUR SUPPORT:** To help them build the case for keeping the current timetable there is a survey on the HRU web site you can fill in. For that and more information go to: www.harborough-rail.co.uk

Pat Reedman

A HUGE Thank You To Our Generous Sponsor!



sponsors needed for Natters we naturally came forward, as we felt it was important that the newsletter kept going."

The generosity of the people of Naseby truly amazes me. So a personal 'thank you' goes out to them (you know who you are!) for making this issue happen!

We are always on the lookout for more sponsors. It costs just £110 (per 20 page issue) for 300 copies to be printed and delivered free of charge to every household and surrounding farm of Naseby. So if you are interested at all, please get in touch.

Amanda Green

This issue we are able to go to print due to two kind residence of Naseby village. As mere newcomers (nearly 5 years), they came forward a while back offering to personally sponsor an entire edition of Naseby Natters!

They have asked to remain anonymous, but when we asked them as to why they wanted to support us they said:

"We sponsored our local newsletter in the previous village we lived in and knew we wanted to do the same when we moved here. When we read about the appeal for new

For sponsorship please contact Gerry Wood on 01604 740444



HENRY, RACHEL & MICHELLE

Opening Times:

Mon to Fri

7am - 8pm

Sat 7am - 6pm

Sun 9 am - 12pm

Shop Phone No: 01604 743577

E-mail: henry @nasebyhq.co.uk

Church Street, Naseby,
Northants, NN6 6DA





The Royal Oak



OPENING TIMES

Monday - Friday: 4.30 to 11pm
Saturday: 12 midday to 11pm
Sunday: 12 midday to 7pm

Children welcome in the TV & Games Room under parental supervision

Dogs are also welcome (on a lead)

Elaine Higgs

Tel: 07985 408240

Fitzgerald Arms



Drinking Hours:

Monday 7pm-12pm
Tuesday - Thursday & Sunday
12pm-3pm & 7pm-12am
Friday
12pm-3pm & 5pm-1am
Saturday
12pm-3pm & 6.30pm-1am
*

Food Served:

Tuesday - Sunday 12pm-2pm
Tuesday - Sunday 7pm-9pm

Open Bank Holiday Mondays for Food & Drink!

Children Welcome

Tel: 01604 740273



UPDATE:



We would firstly like to thank everyone for their cards and support during the festive period. It was very much a learning experience for us here, but was also great fun, we hope you all had a good one too!

I am sure that Mathew (week-end paperboy) and Catherine & Matt (week-day paper **couple**) would like to thank everyone for their tips this Xmas, you know you shouldn't have....no really... you shouldn't have!

We are now on the final stretch of our 1st year (Anniversary party in April?) and are still looking to supply you with new and interesting things for you to spend your money on! (have **YOU** had a Gelli-Baff ??) Any ideas are always appreciated. New items include children's toys, big bars and bags of chocolates/sweets (due to high demand!) and E-Top Up Vouchers for your mobiles.

TEA, COFFEE!!

This spring/summer we are hoping to have 2 new benches with tables fitted at the front the shop for you to sit at with a Tea/Coffee, (coffee machine coming very soon) and a Cake or Sandwich from our locally made range and watch the world go by, (or count traffic, the choice is yours!).

DRY CLEANING

Barnes dry cleaners are now operating a drop off and collection service from the H.Q. every TUESDAY & FRIDAY. From 3 piece suits to duvet covers and curtains,

for a full price list please see inside the shop.

Dry Cleaning Special Offer

For the month of FEBRUARY they are giving us a special offer of

3 FOR £12

(offer excludes curtains, duvets, wedding dresses, leather, suede & evening wear)

NOTICE BOARDS

There are now 3 notice boards up and running...

- WHAT'S ON (free)
- LOCAL BUSINESSES (weekly charge)
- FOR SALE (inside shop, donations to Naseby Church)

See staff for any more info.

FRESH MEAT

There should be a full price list for Fresh Meats available soon to help you with your choosing of weekend meat orders, roasts etc.

We must recommend the New Free Range Organic Whole Chickens on sale regularly, they really are very good!!

EASTER

Don't forget, easter will soon be upon us, so look out for our Easter gift and Egg display.

COMING SOON!

Hot Snacks, Soups, New Charcuterie Range and Fresh Fish.

Once again thank for all your support!!!



Henry, Rachel, Michelle & Danielle
The Naseby H.Q. Crew

*PS: Please return any **Blue Bags** you may have lying around, I'm sure they would love to be used again!*



Naseby Village Hall

& Recreation Ground Management Committee

SO WHAT'S BEEN HAPPENING?

The Sports Court funding application still goes on - Biffa will decide it at their next meeting, which is in March so fingers crossed.

Wyn Sleeman has now taken over the reins of Bookings Clerk and is currently developing a web site so everyone will be able to see when the hall is booked. A big thanks to Wyn for grasping this important role so quickly.

Mike Hopkins has now taken the full responsibility as Treasurer (as well as his role as Secretary) - again, a big thanks to Mike for tackling this crucial role in ensuring that we are keeping our heads above water (financially).

So as we are well into my term as Chairman, what have we achieved? Well the focus has been very much

on putting the 'coffers' back - in essence we were really low in funds and had to work hard to raise sufficient funds in order to drive improvements in this great facility. We have decorated the hall; done the usual repairs and the big win for the year is we purchased our own grass cutter. With the help of Mel Hoyle and Mike and Bridget Baker we have been able to regularly cut the field to get it into great shape - I think you'll all agree it looked better than ever! We no longer have to rely on help with machinery etc and have become fairly self sufficient which is a great step forward. We have also just had an instant water heater installed in the kitchen as people were 'commenting' on how long the water took to heat up - so we do listen to your requests and at the same time help improve our facilities!



The fund raising last year took the form of It's another knockout; Highgate House Dinner (Huge thanks to Cathy; Lesley; Lea & Bridget); Panto (thanks to Becky). Unfortunately we can't stop fund raising or our Village Hall will have to be closed so be prepared to support this great facility that bit more this year - starting with a fab night in Feb, Chips, Fish & Chips!

Events to put into your calendar:

- **24th February** - Chips, Fish & Chips Night - 7pm - tickets from Becky Pope or Naseby HQ
- **10th November** - Ferret Racing Evening
- **16th December** - Pantomime

Martin Bates, Chairman - Naseby Village Hall Mgt Committee

Contact

If you wish to book the hall for an anniversary, children's party or any other activity please contact:
Wyn Sleeman 01604 740963

£10.00 per hour - Large Hall
£6.00 per hour - Upstairs Room

Age Concern

Hopefully by the time you read this some of you will have attended the Crime Prevention Presentation at the Methodist Chapel. I hope you found it useful and I welcome your opinions to help me organise future events.

I will continue to represent Naseby's older residents on the Neighbourhood Watch Committee, and I am happy to liaise with our Community Police Officer, PC Gary Wright, if you have any concerns.



You probably already know that I have volunteered to coordinate Daventry District Council's DASH project in Naseby and Haselbech. I have visited lots of you with free energy saving light bulbs - everyone over 60 is entitled to two free light bulbs, so if you haven't had yours let me know, and I will bring you some.

I also have information on smoke alarms, door chains etc. There will be a Presentation on the DASH project on Wednesday March 14th at 2.30 pm in the Methodist Chapel, at their DBC afternoon. It will be an informal event and

everyone is welcome to come along for a cup of tea and free advice and information.

Following discussions with several people in the village, I wondered if anyone would be interested in the possibility of setting up a small Current Affairs Discussion Group. This might be a way to get to see more people, make new friends, and have some interesting conversation. I'd love some feedback on what you think about this idea - or perhaps you have other ideas you would like to explore.

Liz Capell (tel: 01604 740568)





UPDATE ON THE VILLAGE DESIGN STATEMENT FOR NASEBY



It's some time since we provided a detailed progress report on the Naseby Village Design Statement (VDS). Its purpose was contained in previous issues of Natters.

The background is that our village is very compact in layout but has developed rapidly over the past years. Since the 1960's development has included considerable amounts of infill within the village streets and gardens. A point had been reached where it was felt by many villagers

that the existing planning rules should be supplemented to provide more local input and control. This would effectively protect and retain our village's visual quality, distinctive features and character.

To ensure that local knowledge, views and ideas were contributed to and incorporated into the VDS, a group of village volunteers (Parish Council members and residents) was formed. They undertook the necessary research and produced a draft VDS document which was then submitted to Daventry District Council. Subsequently numerous changes and revisions have been made to take account of the many new government re-organisations and initiatives, particularly relating to sustainability, climate change, the environment and wildlife concerns. A very lengthy

sustainability consultation process with English Heritage, the Environment Agency and the newly formed Natural England and English Nature was successfully completed at the end of last year.

Put simply their common aim was that *"development meets the needs of the present without compromising the ability of future generations to meet their own needs"*.

Now at last we are about to negotiate the final consultations via the Daventry DC Planning Committee and Strategy Group with the VDS being considered for adoption as a Supplementary Planning Document by the Full Council later this year.

Further progress updates will be provided via the Parish Council meetings and in Natters.



Paul Kelly (VDS Group)

FARM MINI UPDATE:

CARVELLS HOME FARM: It was with great sadness that Carvels Home Farm lost their best sheep dog - Hooch - early on in the year with cancer and it left a very big hole in the farm team. So the decision was made to get a trained young dog, so word went round the farm community and they swapped 2 heifers for Buz - so lets hope he can keep the sheep out of the Naseby gardens!

The Chickens are not laying much at the moment but hopefully they will start soon. All the calves were weaned off their mothers in November and have settled down to

the life of luxury being fed in the cattle shed. Calving does not start until March, the same time as the sheep start lambing, so we are recharging our batteries ready for late nights and early mornings.

The fields are waterlogged - maybe stocking up on water ready for a drought this summer. A close check is always kept on the silage and straw supply as using too much at the beginning

of winter could leave us short at the end especially if we have a late cover of snow.

OAK FARM: The latest wind storms brought down several trees which is a great shame. The largest tree was at Oak Farm on the Thornby Road



200yr old Luncombe Oak blown down in the storm



and it will be sadly missed. One of the 200 year old Lucombe oaks that guarded the entrance

of the farm was ripped out of the ground. It seems inconceivable after



A Chat with...



In this edition of Naseby Natters we are chatting with Greg Pritchett, another new member

of the Parish Council and recently appointed neighbourhood watch coordinator for the village

NN: Am I right in thinking you became a Parish Councillor during the summer of 2006?

GP: Yes, a couple of weeks before Paul Reedman.

NN: How did it all happen?

GP: Well, I had tried to join the Parish Council a couple of years ago. There was just one vacancy then and Mel Hoyle pipped me to the post. This time there were two vacancies

all this time! The Lucombe Oak is a cross between a Turkey Oak and a Cork Oak and was created by an Exeter nurseryman who liked it so much he had one cut down to make the planks for his coffin! Lucombe Oaks are evergreen and shed their leaves the following spring. For more information on the Lucombe Oak:

www.the-tree.org.uk/BritishTrees/TreeGallery/oaklucc.htm

Shirley Engler

PS: On a brighter note a Barn Owl spotted behind the factory units - so keep your eyes open!

and, as I've always taken an interest in village matters, Scott Westaway spoke to me about it and I was co-opted, quickly followed by Paul.

NN: Can you tell me something about yourself?

GP: I have lived in the village for about 12 years now. Prior to that I lived in East Haddon (briefly), Southampton and before that Holland, but work brought me to this area. My company, a service management software company, was formed in 1989. I am the technical director.

NN: What's a 'service management software company'?

GP: We help businesses (large and small) manage their IT infrastructures using a combination of people, process and technology based on industry best practice and standards. We employ developers, consultants, trainers, support staff and administrators - all overpaid and underworked.....

NN: Have you always been involved in I.T.?

GP: My degree from Aston University is in physics and computer science so I suppose I'm a physicist, but at 23 I moved to Holland to work for Phillips within their I.T. Research division.

NN: What about family?

GP: I met Elaine, my wife, at a wedding reception. I had come from Holland to be best man for a friend and Elaine was at the wedding. We managed to keep a long distance

relationship going for 2 years by visits and holidays, and have now been together almost twenty years. We married in 1995. We now have two children Alex aged nine and Maria age seven, going on twenty seven!!! They both attend the village school.

NN: So do you speak Dutch?

GP: Yes, I speak it reasonably fluently but I don't do technical Dutch. I also speak and read Greek but I have trouble writing it.

NN: Why Greek?

GP: I'm half Greek and half Brummie. My mum is the Greek part of the family although she has lived in England for many years. I still have relatives in Greece and we try and go over at least once a year. Elaine and I have just bought a property in Halkidiki, the plan is to visit more often.

NN: Hobbies?

GP: D.I.Y., cars, computing (my kids say I'm joined at the hip to my laptop), helping people in the village with their computer problems - I was given a tee shirt at Christmas with the words "No, I will not fix your computer" on the front, but I always do (that's not an invite incidentally) - and of course my beloved West Ham.

NN: Can you sing the song?

GP: Oh yes, I know all the words to 'I'm forever blowing bubbles' but these days I only sing when we are winning, which is unfortunately not very often.

Pat Reedman





THINK! Dying to take the call?



DRIVERS FACE TOUGH NEW PHONE PENALTIES...



Switch off!
Missing a call
won't kill you

Mobile phones have many benefits. They provide security and can be a great help in an emergency. But tests have shown a driver cannot help being distracted by a

phone call or text message. If you are distracted, you will not register hazards or react quickly. A conversation on a hands-free phone is no less distracting than using a hand-held one!

So what's changed?

New legislation to increase the penalty for using a hand-held phone whilst driving will come into force on **27th February 2007**. The current fine of £30 introduced in December 2003 will **increase to**

£60 and three penalty points on your license...and we all know that penalty points don't mean prizes - they can mean higher insurance costs!

If you get six points within two years of passing your test, your license will be revoked and you will need to re-sit the test.

If the case goes to court, you could risk a maximum fine of £1,000, rising to £2,500 for the driver of a bus, coach, or heavy goods vehicle.

But did you also know?

A driver can also be prosecuted for

using a hands-free device if you are not in proper control of your vehicle when using the device. The penalties are the same - £60 fine and three points on your license.

Why are the penalties going up?

- It is hard to do two things at once and research has shown that if you are using a mobile phone whilst driving, you are **four times more likely to have a crash!**
- In fact, if you use any type of mobile be it hands free or hands held, your reaction times are worse than if you were driving

under the influence of alcohol. Tests have shown that reaction times for drivers using a hand-held phone **slows reactions by 50%** when compared to normal driving and by 30% when compared to being drunk (*1)

- The use of a mobile phone often involves distractions which could be visual, auditory, mental or physical (*1)

Even if you're a careful driver, it's easy to be distracted by a phone call or text message - and that split second lapse in concentration could result in a crash!

How does the law apply?

While driving, you will be breaking the law if you pick up or use any type of phone that is, or must be, held to operate it. For example, this means you may not use your mobile phone:

- when you are stopped at traffic lights
- when you are queuing in traffic
- to receive calls, pictures, text messages or to access the Internet

Are there any exceptions?

- A driver may call 999 or 112 in response to a genuine emergency
- Two-way radios are not covered by this offence but other devices for sending or receiving data are included if they are held while driving, i.e. a PDA, Blackberry or similar device

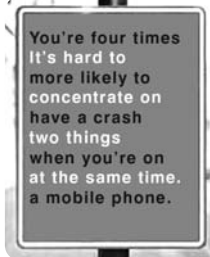
Home Office figures for 2004 show that nearly 74,000 fixed-penalty notices were issued in England and Wales for illegal use of a mobile phone while driving.

A campaign to raise awareness of the new fixed penalty has already begun including radio, press and online.

From December 2003 (when it became an offence to use a hand-held phone while driving) to the end of December 2006, Northamptonshire Police had issued 2,837 fixed penalty notices to drivers using a mobile phone at the wheel.

Northamptonshire Police have vowed that they will continue to deal

robustly with anyone using a mobile phone whilst driving and have welcomed the changes. Casualty Reduction Officer PC Keith Millard, of Northamptonshire Police, said: "We consider the penalty points and increased





fine to be a more appropriate penalty and hope it will deter drivers. This is an important move to try to enhance the safety of all road users. Using a mobile phone whilst driving is a serious offence with serious consequences and we hope the more severe penalties - particularly the

three penalty points - will make drivers understand the seriousness and dangers of what they are doing."

Northamptonshire Police proactively targets people using mobile phones in vehicles as part of its 'Operation Roadsafe' campaign, and has been disappointed to find a seemingly

increasing number of people flouting the law and putting their own lives and the lives of others at risk.

THINK! Switch off before you drive off!

Amanda Green

**1 - Refers to the 'Direct Line Mobile Phone Report' of 2002*

So what's in a name?

What a fascinating subject Genealogy is! I started on the Ancestry Trail about eight years ago. As a child I wondered 'why didn't I have a normal middle name like Ann, Susan or Margaret like my friends had'? Mine? - COPPELLE - what sort of name was that?! I later found out that it was a surname and a name that lead me on a chronological journey back to my forefathers.

It is my Paternal Grandmother's maiden name and is really spelled Coppell. She added the 'E' on the end as she was fed up with it being pronounced 'Cople' instead of 'Coppell' as it should be. It was given to my Father as a middle name and then to me.

It is an unusual name and I had to find out where it originated from, so, where did I start? I didn't seem to have any living relatives on my Dad's side. All I knew was that Grandma was born in Liverpool. I didn't have a computer at the time so I went to Harborough library and looked through all the phone books, I was there so long that I think the staff thought I'd gone in for a warm or was waiting for a bus!

Anyway - I found some Coppells in



the Liverpool directory and the first one I phoned said he had just received a load of info from a 'Red' Coppell in Canada but as he wasn't interested in it he would send it to me. WHAT LUCK!

The package arrived and what an 'Aladins Cave!' Birth and Marriage Certificates, names of Grandmas parents and her siblings - and photos! Red Coppell turned out to be the son of my Grandmother's brother and that made him my Father's Cousin. So now I have relatives in Canada. Through this info I went to the Records Office in Liverpool and discovered a Captain Edward Coppell who sailed to New Zealand in the early 1800s and settled his Family there. So - relatives in New Zealand!

By now I have a computer and go on to the various genealogy websites and discover that there is a city in Texas called Coppell - so named after a George Alfred Watkin Coppell - my G.Great uncle - an Engineer from Liverpool who was instrumental in getting the Railroad through difficult terrain and the citizens where so grateful they renamed the place after him!

In the Walker Art Gallery in Liverpool

there are Paintings by a William Daniels - a well known Liverpool Portrait Artist in the 1800s descended from a Penelope Coppell. Is this where Dad and I got our Artistic trait from?

I have found Hat Makers, Milliners, Printers and Engravers, Ship Owners and Freeman of the City of Liverpool, but strangely enough until the 1700s there were Coppells only in Liverpool and nowhere else in the country. That probably means that they came from 'Abroad' and I have some more searching to do. Its been an amazing journey of discovery, and that's only one branch of the family!

If you are thinking of 'doing the Family Tree' one bit of advice I would give is 'be methodical', work back one step at a time and verify everything with documents if possible. You will get stories of 'great wealth', 'royalty' and 'skeletons in cupboards', write them down - who told you and when - then get the proof!

Family History can be very time consuming, so if its not your main interest, limit the time spent on it otherwise it can take over. Happy Hunting!

Roz. Bradshaw.



Helpful Websites

www.genesconnected.com
www.ancestry.com
www.myfamily.com





“Can we talk to Martin (aka Dad)?”



Our intrepid reporters Lydia and Cara strike again, first they went all the way to the shop to interview Henry, now

they travel that bit closer to home, well a lot closer to home, well actually to their home - to talk to the **Chairman of the Village Hall and Recreation Ground Committee**, or their dad, Martin for short....

LC: How did you get involved with the Village Hall dad?

M: I received a flyer through the door that was an invite to the Annual General Meeting of the Committee and just attended to see what it was all about.

LC: What is it all about?

M: Well it's a committee made up of various members of the village, which is formed to manage the village hall and recreation ground. We raise funds to ensure that we can keep this great facility going

LC: So why did you get involved?

M: Living in a village is a lovely way of life, and I believe that it's quite important to 'put a bit back' to ensure that we keep all the village's facilities in great order and create a great place for the whole village to use and enjoy.

LC: When did you become Chairman?

M: At the last Annual General

Meeting where I was voted in. Every year new members are welcomed in and roles within the committee are voted on.

LC: What have you done as Chairman?

M: I think the entire committee has achieved a great deal - we have raised lots in funds to help keep this facility going. With lots of help, I managed to organise the It's A Knockout events over the past couple of years to raise funds. We also raised money by putting on other events such as a black tie dinner and the Christmas Panto. We have also greatly improved the facilities - we have decorated the hall and we have managed to get our own grass cutter to ensure that the field is fit for people to use.

LC: Why do you have to raise money?

M: We are a charity and must raise funds in order to keep the place open - electricity; water; repairs; decorating etc all cost money as

well as paying off loans that were taken to get the place built.

LC: What are you doing this year to raise money?

M: We are having a casino evening in February for the adults; we will have a Summer event, hopefully another Black Tie Dinner, and another Panto at Christmas.

LC: How long will you be Chairman?

M: That depends on the annual meeting and who turns up, and who votes. I would like to still be involved and help fund raise, but maybe someone will want a chance to become the next Chairman (hopefully).

LC: Dad, can we ask one more question?

M: Yes

LC: Can we have some more pocket money?

M: Goodnight girls!

Lydia (aged 10) and Cara (aged 5) and Pat Reedman (age undisclosed!!!!)



OLD AERIAL PHOTO OF NASEBY:
Supplied by Rupert Chapman



'PAY-AS-YOU-GO' ROAD CHARGE PLAN

According to a BBC News report drivers could pay up to £1.34p a mile in "pay-as-you go" road charges under new government plans

You may have heard recently about the proposed car tax scheme. The government's proposal to introduce road pricing will mean you having to purchase a tracking device for your car and paying a monthly bill to use it. The tracking device will cost about £200 and in a recent study by the BBC, the lowest monthly bill was £28 for a rural florist and £194 for a delivery driver. A non working mother who used the car to take the kids to school paid £86 in one month.

On top of this massive increase in tax, you will be tracked. Somebody will know where you are at all times. They will also know how fast you have been going, so even if you accidentally creep over a speed limit in time you can probably expect a Notice of Intended Prosecution with your monthly bill.

More details from petition creator: Peter Roberts, an account manager from Telford, Shropshire

"The idea of tracking every vehicle at all times is sinister and wrong. Road pricing is already here with

the high level of taxation on fuel. The more you travel - the more tax you pay. It will be an unfair tax on those who live apart from families and poorer people who will not be able to afford the high monthly costs. Please Mr Blair - forget about road pricing and concentrate on improving our roads to reduce congestion!"



There is a petition on the 10 Downing Street website but there is not long left to register your objection to the 'Pay As You Go' road tax. Deadline to sign up is by the 20th February 2007. 750,000 signatures are required for the government to at least take any notice.

Number of signatures as of February the 5th was at 662,640

Once you've given your details (you don't have to give your full address, just house number and postcode will do), they will send you an email with a link in it. Once you click on that link, you'll have signed the petition. Easy as that!

If you are concerned about this Orwellian plan and want to stop the constant bashing of the car driver, please sign the petition on No 10's new website:

<http://petitions.pm.gov.uk/traveltax>

Amanda Green

ANY NEWZ ON NASEBY?

The Natters Team has been liaising with our Southern Hemisphere cousins - Naseby in New Zealand - and researching the historical connection between our two villages.



To support this project, we would love to hear from local residents that have any knowledge on the connection between our two villages. For example:-

- Do you know exactly why Naseby in New Zealand was named after our village?
- Do you know anybody that had family members emigrate to Naseby New Zealand during the gold rush of the 1800's?
- Is it pure coincidence that Naseby New Zealand has a hotel called 'The Royal' or is there a connection with our 'Royal Oak'?

If you have any information on these or other subjects connecting our villages, please get in touch with John Anderson - johns.anderson@virgin.net or telephone 01604 743141

Sally Field





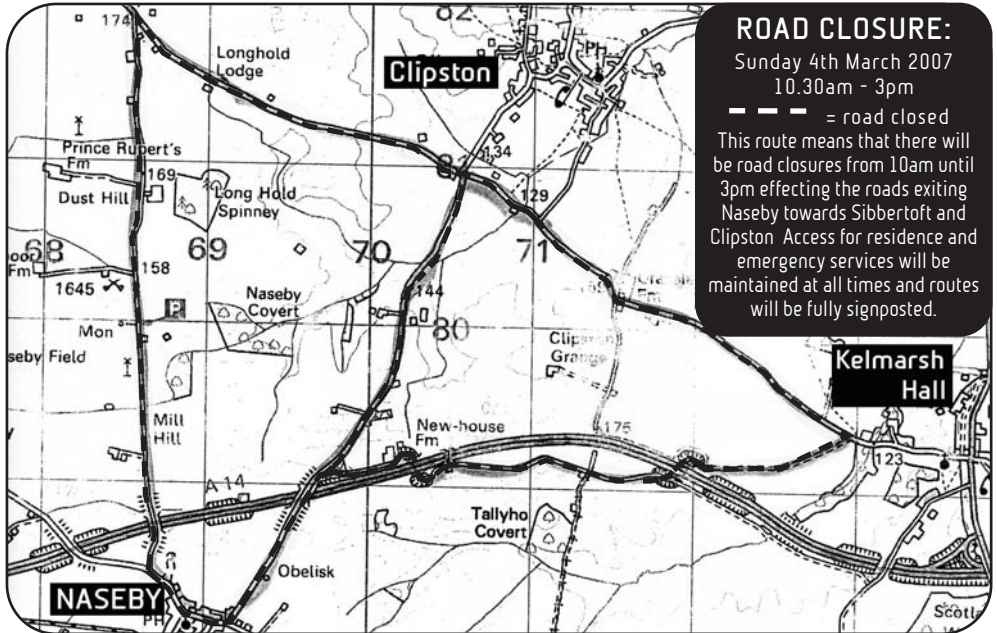
Marie Curie Run!



- **Location:** Kelmarsh Hall, Kelmarsh, Northamptonshire
- **Date:** Sunday March 4th 2007
- **Time:** 10.45am

Join the Great Daffodil Run in its 10th Anniversary in March 2007. The 10k run is a single lap and the 15 mile run is a multiple lap road route taking runners through the quiet undulating country roads of the picturesque villages of Kelmarsh and Naseby.

WHY NOT HELP CHEER THEM ON?
We're hoping to get some people to cheer the runners on as they run down Newlands perhaps with some music and refreshments (like we did last year) as it was so well received! If you are able to help out or just want to join in the cheering contact Cathy Hoyle 01604 740848.
Amanda Green



ROAD CLOSURE:

Sunday 4th March 2007
10.30am - 3pm

--- = road closed
This route means that there will be road closures from 10am until 3pm effecting the roads exiting Naseby towards Sibbertoft and Clipston. Access for residence and emergency services will be maintained at all times and routes will be fully signposted.



UPDATE... Firstly I would like to say a huge thank you to John Price from Church Street for donating a Marks & Spencer carrier bag full of change to my fundraising for children with cancer.

After reading the Joshua Foundation spare change tin was taken from Naseby HQ shop, John, along with his work colleagues very generously gave some

money. This helped tremendously. A total surprise - thank you John, you are a star!

I am also hoping to do a raffle/tombola, so if you have any prizes or even unwanted Christmas presents would be really appreciated.

Only 6 more months to go until the Oz adventure! Thanks for your support!

Cherise Gould

C BEGLEY BUILDING LTD

- Local family run business
- Established in 1930
- All types of building work considered from small repairs and patios to restoration projects & new builds

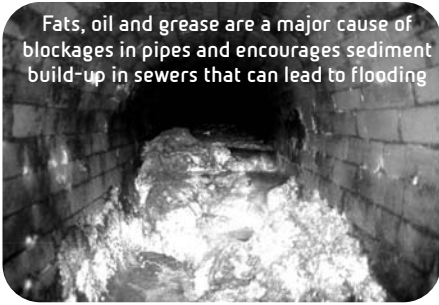
For a genuine estimate call

Chris Begley on:
01604 743722
or 07748 184659





FAT TRAPS! *(No, its not a New Years Resolution!)*



Fats, oil and grease are a major cause of blockages in pipes and encourages sediment build-up in sewers that can lead to flooding

Do you want to help the environment and the the local bird population (starlings excluded!)? A recent press release from Anglian Water promotes the use of 'Fat Traps' to prevent blockages in pipes and sewers.

Every year householders pour thousands of litres of waste fat, grease and cooking oil down their sinks, unaware of the problems it

may cause. The hot liquid cools quickly to form a solid mass which can, over time, build up in pipes and sewers and result in a blockage. In extreme situations, drains and sewers become flooded leading to the flooding of gardens and properties.



FAT TRAP

This has led to the creation of a new product, the 'Fat Trap'. A Fat Trap is a sealable tub that encourages people to collect the fat and oils in it for disposal into a bin or (much better) turning it into bird food! This product is being promoted by Anglian Water and the Royal Society for the Protection of Birds (RSPB). You can purchase a Fat Trap from

the manufacturer, Less Mess Ltd at www.lessmess.co.uk or by calling 01271 817 977.

The price for a twin pack of Fat Traps starts at £3.37 (or £2.70 for a paper version) including postage and packing. Anglian Water's own website www.anglianwater.co.uk also claims to offer the Fat Trap **free** to customers in their region. We have only heard of 2 people successfully receiving one by this route and they took quite a while to come thru - so you may need to be patient!!!



Sandra Sleeman

MAKE 'N' DO!

FEEDING THE BIRDS

At this time of year birds need all the energy they can get and mixing waste fat with seeds, nuts and raisins to create your own 'bird cake' is a great food source for them. All you need to make a bird cake is:

INGREDIENTS

- Fat from your fat trap (or suet or lard)
- Good quality bird seed
- Raisins
- Peanuts
- Grated cheese
- Yoghurt pots
- String
- Mixing bowl
- Scissors

METHOD

1. Carefully make a small hole in the bottom of a yoghurt pot. Thread string through the hole and tie a knot on the inside. Leave enough string so that you can tie the pot to a tree or your bird table.
2. Allow the fat or lard to warm up to room temperature, but don't melt it. Then cut it up into small pieces and put it in the mixing bowl.
3. Add the other ingredients to the bowl and mix them together with your finger tips. Keep adding



the seed/raisin/ cheese mixture and squidding it until the fat holds it all together.

4. Fill your yoghurt pots with bird cake mixture and put them in the fridge to set for an hour or so.
5. Hang your speedy bird cakes from trees or your bird table and then sit back and watch for greenfinches, tits and possibly even great spotted woodpeckers!



www.rspb.org.uk/youth/makeanddo/activities/birdcake.asp





NASEBY LADIES ROUNDERS



Winter has been quiet and relaxing for the players but the new season will be upon us soon. Training will be starting with some practice in the village hall with our wonderful coach and mentor The Great Mr Barry Duddleston (or Petrocelli as he is known in Naseby).

There will be a pre-season meeting for all players or anyone wishing to play at the Royal Oak on Monday 26th February 2007.

See you all then!



Contact:

Bridget Baker 01604 470 007
Lesley Campbell 01604 743 172

Lesley Campbell

MAC USER GROUP



Thanks to publicity in MAC magazines two new members [from Northampton &

Uppingham] came to the January Mac-User-Group meeting.

Anne Gilmore gave a splendid demonstration about 'using layers in Photoshop Elements. A teaching DVD about the same subject cemented it in our brains....hopefully it'll stay there!

The next meetings will be March 9th and April 13th. Stuart will talk and demonstrate how to do basic problem solving with the Mac. For more info - or just to be sure if there is indeed a meeting- please contact Stuart and Leny Cato (tel: 01604 743166)

Leny Cato

The Naseby Battlefield Project:

As travellers on the Naseby to East Farndon road will have seen, work has been continuing on the new viewpoints and the Obelisk site. On the latter the hedge has been laid, completing the revelation of the monument to public gaze. At the Fairfax Viewpoint, just north of the A14, and at Rupert's Viewpoint near East Farndon, the car and coach parking surface has been laid and the fencing installed. The earthen bunds are in place and it remains to get the decking of the viewing platforms built. Once that has been done, and assuming it dries out a bit, replanting can start.

Further improvements at the Obelisk and at the Cromwell monument are to be carried out, principally in improving the pedestrian access at both sites. The plans drawn up first time round were not satisfactory and are being redrawn, after which consultation with the relevant parties will take place prior to submission to the District Council.



fairfax view point under construction



Work on the new interpretation boards is now in hand and it is hoped that this phase of the development will be complete in time to welcome summer visitors. Work has also been going ahead on the writing and construction of a website which will tell the story of the



ABOVE: Members of the Sealed Knot standing under the flag that 'was' a Royal Standard. I say 'was' because the recent gales shredded it so it is no longer there!!!

battle and the war, relate that story to the landscape and, finally, explain just what the Project is all about.

The Naseby Battlefield Project has attracted welcome support. We now have a formal agreement with the Royal Armouries which gives us access to expert advice and top-level verification of our work. We also have the support of the largest re-enactment society with an interest in the Civil War, the Sealed Knot. They are partnering our efforts to raise funds for the work being planned

and working in concert with us in the educational programme that is an integral part of our undertaking.

Martin Marix Evans
Chairman, Naseby Project Management Committee
martin@naseby.com





Gardening Tips!

TOP 10 JOBS: FEBRUARY

1. Prepare vegetable seed beds, and sow some vegetables under cover
2. Chit potato tubers
3. Protect blossom on apricots, nectarines and peaches
4. Net fruit and vegetable crops
5. Prune winter-flowering shrubs that have finished flowering
6. Divide bulbs and plant those that need planting 'in the green'
7. Prune Wisteria
8. Prune hardy evergreen hedges, and renovate overgrown deciduous hedges
9. Prune conservatory climbers
10. Cut back deciduous grasses left uncut over the winter

TOP 10 JOBS: MARCH

1. Plant shallots, onion sets and early potatoes
2. Protect spring shoots from slugs
3. Plant summer-flowering bulbs
4. Lift and divide overgrown clumps of perennials
5. Top dress containers with fresh compost
6. Mow the lawn on dry days
7. Cut back Cornus (dogwood) and Salix (willow) grown for colourful winter stems
8. Weeds come back into growth - deal with them before they get out of hand
9. Start feeding fish and using the pond fountain; remove pond heaters
10. Open the greenhouse or conservatory doors and vents on warm days

TOP 10 JOBS: APRIL

1. Keep weeds under control
2. Protect fruit blossom from late frosts



This is my first opportunity to say Hello as Chair of the NHS (no not that other one thank goodness!) since Liz Crowley stepped down to concentrate on a new life in a new place. I'm sure all will join me in wishing the happy couple success, good health and happiness for the future.

Following on from our highly successful 2006 events, our 2007 Talks and Tours programme is now in full swing. A big thank you goes to NHS's president Mike Westaway for his very interesting and informative talk on "Old Naseby" at our last meeting. Using rare slides which hadn't seen the light of day for about 20 years, Mike gave us a vivid insight into life in Naseby in the early 1930/50's, which apparently at times was rather more colourful than we ever imagined. However, it was sad to see glimpses of the Old Windmill, Tithe Barn, Roundhouse and many other character buildings, all long gone.

As before, our 2007 programme is designed to cater for our members and non-members wide ranging historical interests both local and national. Over the coming months we will be undertaking guided tours of Foxton Locks and Husbands Bosworth. You will have noticed that The Battlefield Trust's Naseby Project is starting to take shape. At our 2nd

3. Tie in climbing and rambling roses
4. Sow hardy annuals and herb seeds
5. Start to feed citrus plants
6. Increase water given to houseplants



May meeting Martin Marix-Evans will tell us exactly what's going on and confirm when the new Battlefield Tours will be up and running. Our group will be amongst the first to try the new facilities. Later in the year we will learn some more about the early Postal Service and Railways (with a Naseby slant). Plus we have lots more interesting planned items for you to look forward to!

We generally hold our talks at 8pm. on the first Wednesday of the month, all very informal and friendly (plus the exciting Raffle). Everyone is welcome, so non-members can simply come along and pay at the door. Anyone who is interested in joining should contact the NHS Secretary - Chris Murphy .

Full details of our Talks and Tours will be available on the Naseby Village website www.naseby.org. We also circulate information on Posters around the village and provide flyers (only to members and those who request them - contact Chris Murphy).

Paul Kelly

PS. Our AGM is on the 4th April so if you would like to help us with new ideas for our 2008 programme or get more involved with any other aspect of the NHS please come along.

Contacts

Chris Murphy	01604 740748
Ian Arnott	01604 743199

7. Feed hungry shrubs and roses
 8. Sow new lawns or repair bare patches
 9. Prune fig trees
 10. Divide bamboos and waterlilies
- Phil Lewis**





Neighbourhood Watch News

There have been some teething troubles in transferring AK's details over to mine since he left, which has resulted in me not getting the most up to date information from the police. I am on the case.



Naturally through the Parish Council I tend to get most of my information regarding the community anyway. In December a vehicle was stolen from Nutcote and some tools from Manor Farm.

CRIME PREVENTION TALKS: These are aimed at the elderly and will take place in the chapel

- In early February we had a talk on Crime Prevention by Kate Wright (Gary's wife). It was a general presentation on keeping your house safe, do's and don'ts, and was very well received.
- 14th March 2007 2.30pm - Run by DASH (Daventry Area Safer Homes)

For further details contact Liz Capell (see the 'Age Concern' article - P9).

Vigilance is always the key - keep your doors locked and alarm your houses even for brief excursions. Report **'anything'** suspicious to any member of the Neighbourhood Watch.

HOW TO CUT YOUR RISK FROM VEHICLE CRIME

Theft from vehicles is a preventable crime - leave nothing in your car and there is nothing for the criminal to take. Here are some top tips to beat vehicle crime:

- Never leave any property at all in your car - even if you will just be away for a few moments

- Always lock your vehicle, and never leave it with the keys in the ignition - criminals target filling stations, the school run and other places where drivers are tempted to do this
- Keep your car keys safe and out of sight when you are at home
- Fit a detachable radio or radio fascia and take it with you
- Park in a garage if you can and make sure it is alarmed and secure, with heavy-duty locks
- Park in well-lit areas on the street and report street lights that are not working to the County Council
- Never leave your motorcycle in your driveway where thieves can spot it and return to target it later
- Secure your bike away, putting it in a garage or shed and then using a heavy-duty lock or chain to fix it to an anchor point
- Fit a secondary security device to your vehicle
- Never leave your driving documents in the vehicle

HIGH TECH THEFTS:

The latest in-car technology gadgets are the latest temptation for criminals in the county.

As this new technology becomes more widespread, police are again

Don't leave your Sat Nav in your vehicle - or you will lose it!

Contacts

Community Beat Officer:
PC Gary Wright
c/o Pitsford Police Station

Community Support Officer:
PCSO Glyn Lewis

Both on Tel: 01604 300300

Co-ordinator:
Greg Pritchett
Dakwell, Church St
Tel/Fax: 01604 740717
E-mail:
gregpritchett@hotmail.com

Deputy Co-ordinator:
Steve Clark - 6 Newlands

Members:
Andy Austin - 'Ceybirds' 38 High St
Maggie Draper
- Shannonside, Carvels Lane
Ray Ellis - 65, High Street
Lynn Dyett - 14 Newlands
Mike Willis - 7 Newlands
Mark Norton - 2 Hall Close
Liz Capell - 16 Nutcote
Rachel [a.k.a. 'Ratty'] Gander,
the Post lady - c/o Naseby HQ

reminding people to remove everything they can and never be tempted to leave items in the boot or glove box. Force Community Safety Advisor Mike Franklin said: "Satellite navigation systems, particularly the new removable systems, are becoming increasingly popular items for car criminals to steal."

Mike said that motorists should always detach these systems wherever possible and remove them from the vehicle completely. Items left in the boot or in the glove box remain vulnerable to theft.

Greg Pritchett

PS: Oh, about why I took NW over - simple answer - nobody else wanted to do it! ...and Allan Kirk collared me while I was 'vulnerable' in the pub (i.e after a few pints!)



Gardening Club Update

Following the AGM we now have our New Programme for 2007(see right). Owing to a retirement we now have a vacancy on the committee. Please don't all rush at once - but all applications will be welcome! We meet about 4 times a year in the afternoon and between drinks of tea or wine, decide on any forthcoming changes or additions to the programme etc.

The idea to have some of our meetings at Naseby village hall was very successful with over 40

members and guests attending each of the 3 meetings we held here.

We are keen to attract new members and at the AGM signed up 3 new members from Naseby and 2 from Market Harborough.

DATE FOR YOUR DIARIES:

- **21st March** - Clipston village hall - when Fred Stokes will give a talk on "The Wildlife Hospital at Kibworth". He has visited us before and was very entertaining.
- **25th April** - A visit to the Old Rectory gardens at Sudborough



We were able to give over £500 to various charities in 2006 (British Heart Foundation,

McMillan Nurses etc) so come and support your local Gardening Club and help others at the same time.

We have some attractive visits lined up including Hampton Court

Flower Show (on the last day you get some real bargains!) Thorpe, Lubbenham Hall, etc.

Ring Gerry Wood for more info and keep an eye on the notice board at Naseby H.Q. where we post our forthcoming meetings.

Gerry Wood

Things women (& men!) should know to stay safe!

Please take the time to read these pointers. There may just be one or two you hadn't thought of:

1. Tip from Tae Kwon Do: The elbow is the strongest point on your body. If you are close enough to use it, do!
2. If a robber asks for your handbag, **DO NOT HAND IT TO HIM.** Toss it away from you.... he is probably more interested in your handbag than you and he will go for the handbag. **RUN LIKE MAD IN THE OTHER DIRECTION!**
3. If you are ever thrown into the boot of a car: Kick out the back tail lights and stick your arm through the hole and start waving. The driver won't see



you but everybody else will! This has saved lives.

4. Women have a tendency to get into their cars after shopping, eating, working, etc, and just sit (doing their cheque book, or making a list). **DON'T DO THIS!** A predator could be watching you, and this is the perfect opportunity for him to get in on the passenger side and attack you. **AS SOON AS YOU GET INTO YOUR CAR, LOCK THE DOORS AND LEAVE.**
5. A few notes about getting into your car in a car park:-
A) Be aware: look around you, look into your car, at the passenger side floor, and check the back seat.

B) If you are parked next to a big van, enter your car from the passenger door. Most attackers surprise their victims by pulling them into their vans while the women are attempting to get into their cars.

C) Look at the car parked on the driver's side of your vehicle, and the passenger side. If a male is sitting alone in the seat nearest your car, you may want to walk back into the shop, or work, and get a guard/policeman/someone to walk you back out.

IT IS ALWAYS BETTER TO BE SAFE THAN SORRY (and better paranoid than dead!)

Amanda Green





BUSINESS DIRECTORY

121 Accountancy
Business Accounts & Personal Tax Returns
Contact: Jonathan Guy
Tel: 01604 743511

21-12 Marketing
Marketing Services Agency
Contact: Richard Nicholson
T: 01604 743177 M: 07917 40 2112

Capell Bros TV & Radio Aerial
TV & Aerial specialists
Contact: Geoff Capell
Tel: 01858 465555/01604 740 568

C Begley Building Ltd
All types of building work considered
Contact: Chris Begley
Tel: 01604 743722 /07748 184659

Fun on the Run!
Bouncy Castle Hire - Indoor & Outdoor
Contact: Rachel or Glen
Tel: 01604 743195 - **Mob:** 07939 93678

G.Wood Turner
Wood turned decorative pieces
Contact: Gerry Wood
Tel: 01604 740444

Halls of Clipston
Exterior & Interior Painter & Decorator
Contact: Kevin
Tel: 01858 525 222 **Mob:** 07985 313 076

J.L.M Tiling
Ceramic wall & floor tiling specialist
Contact: John Muggleton
Tel: 07932 600157/01858 575816

Helen West Jeweller
Handmade gold & silver jewellery
Contact: Helen West
Tel: 01604 882755

Mel Hoyle
All fencing, paving & gardening needs
Tel: 01604 740598

Midland Environmental Ltd
All forms of pest control
Freephone: 0800 6529135

Hart Carpentry
Loft conversions/Flooring/General building
Contact: Justin Hart
Tel: 01604 505266/07733101661

Roz Bradshaw Picture Framing
Creative framing solutions
Contact: Roz Bradshaw
Tel: 01604 740473

Westaway Motors
Cars for sale, servicing & MOTs
Tel: 01604 740246

LIST YOUR COMPANY FOR FREE AND SEEN BY OVER 300 HOUSEHOLDS!
Simply e-mail Amanda at: aj@ajdesign.biz with your company name, contact details and a short list of services. It's easy and it's **FREE** (although we do accept any donations!) Thanks to **MJ Burdett** for their kind donation this issue!

M J
BURDETT
PLUMBING & HEATING ENGINEER

Call Mark
Mob: 07841 572458
Tel: 01604 740704

- *Central heating installation, repairs & service*
- *Oil fired Boilers supplied & fitted*
- *Full bathroom installation*
- *For all your plumbing requirements*
- *No job too small*
- *Over 20 years experience*

UPDATED CLUBS, GROUPS & SOCIETIES TO JOIN IN NASEBY!

Age Concern
Contact with the other agencies
Contact: Liz Capell (01604 740568)

Badminton Club
Meet at the village hall
Contact: Tony Hoare (01604 743136)

Bell Ringing
Practice night is on Tuesdays
Contact: Avis Aldrich (01604 740532)

Bridge Club
Purely on a social basis
Contact: Mike Willis (01604 740437)

Clipston & District Gardening Club
Monthly meetings with speakers
Contact: Gerry Wood (01604 740444)

Cribbage
Mondays between April and October
Contact: Phil Brewin or Ray Ellis (01604 740442/740562)

Drinks, Biscuit & Chat
2nd Wednesday 2.30 onwards
Contact: Joyce Vials (01604 740887)

Mothers Union
1st Wednesday of the month
Contact: Avis Aldrich (01604 740532)

Mums & Tots
Thursday 1.30 to 3.30pm - term time
Contact: Ruth Watson (01604 740845)

Naseby Historical Society
Interesting talks and tours
Contact: Chris Murphy (01604 740748)

Naseby Radio Control Car Club
1/10th Scale Electric Touring Car Racing
Contact: John (01604 740492)

Neighbourhood Watch
Team of 10 plus other helpers
Contact: Greg Pritchett (01604 740717)

Riding for the Disabled
Mondays 4-5.30 pm/Apr-Oct term time
Contact: Tina Fanshawe (01604 740308)

Rounders
Games will be home & away
Contact: Bridget Baker (01604 740007)

School Football Team
Wednesday afternoons
Contact: Mel Hoyle (01604 740848)

Table Tennis
Meeting on Monday evenings
Contact: Mike Willis (01604 740437)

Village Hall
Always looking for new users
Contact: Wyn Sleeman (01604 740963)

Womans Institute (WI)
Second Thursday monthly
Contact: Pat Yates (01604 740657)

Youth Club
Friday 7.15-9pm in winter months
Contact: Stewart Nuttall (01604 740269)

Remember to mention 'Naseby Natters' when contacting any of the companies, groups & clubs above!



The Naseby W.I.

There has been a W.I. Group in Naseby for more than 60 years. The Diamond Jubilee was last November and members celebrated in typical Naseby W.I. style, by having a special meal. This was held at The Old Vicarage (see photo below). Anne Key had prepared a superb dinner, wine flowed, the celebration cake (made by Mary Wood) was delicious and the room looked beautiful. All in all, a highly successful evening!

Giggle' was an account of the trials and tribulations he encountered when setting up a worm farming business and was every bit as entertaining as forecast.

Members were back to partying in January! Following the business part of their monthly meeting they went on to enjoy their New Year Party. This was at the home of Pat Yates, who provided all the drinks. Members took along a lovely variety of food and thoroughly enjoyed the entertainment which followed.



The guest speaker at the meeting on 8th February was Viv Jozsa who gave a fascinating talk entitled 'Colour Analysis'. We all have a unique skin tone and eye colour, which means some

Several visitors attended the monthly meeting in December when the guest speaker was Martin Clarke. His talk 'A Wiggle with a

colours make you look great, some have completely the opposite effect! Knowing and wearing your own correct colours can help make you

look healthier, younger and fresher, and give you a renewed sense of excitement and confidence.

FUTURE MEETING:

- **8th March** - the speaker will be Sue Edwards who will be talking about 'The Story Behind the Painting'
- **12th April** - gardening expert, Mr. Nicholas Warliker, will be explaining about 'Making Things Grow'

All of these meetings will be held at 7.30pm in The Village Hall and any ladies wishing to attend would be very welcome.

There will be no guest speaker at the May meeting, as members will be discussing and voting on the Resolutions for the Annual General Meeting.

Mary Hackett
Tel. 01604 740657



KIDS PUZZLE ANSWERS (from back page)

KIDS SPOT THE DIFFERENCE ANSWERS:
 Missing from picture B are: 1) Eggs in the corner 2) Bunny is missing a tail 3) Missing flower 4) Easter bunny missing bow 5) No sun 6) Missing chick 7) Chick is missing tail

KIDS PUZZLE ANSWERS (from back page)



SOUP LUNCH

Why not come along to the WI annual fund raising event!

Date: Saturday 10th March
Time: 12pm - 2pm
Where: Village Hall
Costs: Adults £4/Children £2

ALL ARE WELCOME!



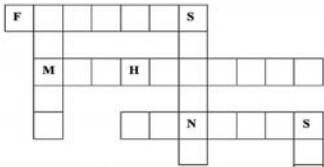


Kids Corner!

Supplied by the children of Y5 & 6 from Naseby School

MOTHERS DAY FACTS & TRADITIONS:

- 1) Mothers day in the UK is held on the 4th Sunday (the middle Sunday) of Lent (the period of fasting before Easter)
- 2) Mothers day is also known as Mothering Sunday, or Refreshment Sunday or Mid-Lent Sunday, or Laetare Sunday.
- 3) This year Mothering Sunday will be on the 18th March.
- 4) The origin of Mothers day is not exactly clear, in terms of its current meaning, which is a day to honour ones mother. Mothering Sunday probably dates from the 17th century.
- 5) Whilst Mother's day is celebrated on different days and for different reasons in many countries of the world the central tenet of honouring your mother is universal. The day is closely associated with the giving of mothers day gifts such as flowers, chocolates or general pampering. And also of course the sending of cards, which the greeting card industry has exploited to the full!



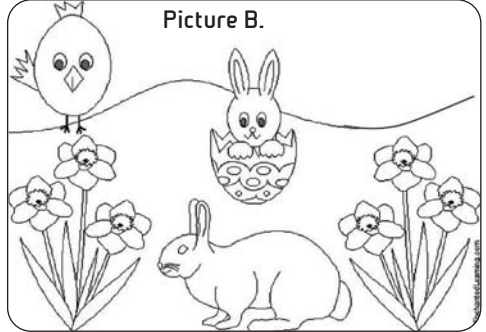
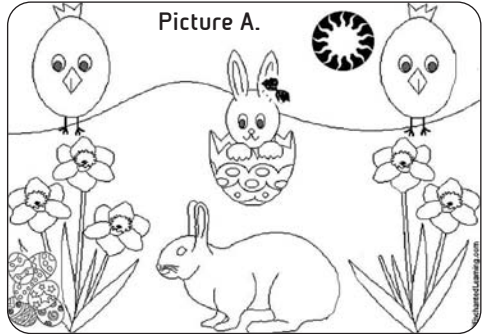
CAN YOU COMPLETE OUR SPRINGTIME CROSSWORD?

- ACROSS**
 BUNNIES
 EASTER
 FLOWERS
 MOTHERS DAY
- DOWN**
 ANIMALS
 LAMBS
 SPRING
 SUNSHINE



Kids Puzzle!

Can you find the 7 differences between our two pictures?



"Kids Corner" this issue by: Sarah Billingham (Spot the difference), Annie Smith and Alix Nicholson (Crossword), Katie Hoyle (Jokes) and Murrin Campbell (Facts).

Have your say!

We need you to supply us with information, otherwise we won't have a newsletter to produce! So e-mail us or pick up the phone! It's that easy!
Deadline for the next issue: 1st May 2007

Please note that the articles featured in this Newsletter are the opinions of the individuals who supplied them and are not necessarily the opinions of the publishers of the Newsletter. The publishers take no responsibility for the accuracy of the content.

Produced by:
Amanda Green
AJ Design
February 2007
Printed by: Kall Kwik
printing@kallkwik-watford.co.uk



aj@ajdesign.biz

Joke Corner

Why are Infant teachers so good?
They know how to make little things count!

What do short-sighted ghosts wear?
Spooktacles!

Where do cows go out on a date?
To the mooooooooooon!

What colour is a cheerleader?
Yeller!

Knock, knock
Who's there?
Frank
Frank who?
Frankly, I don't know!