



Naseby
PARISH COUNCIL

Naseby Parish Council meet on the first Thursday of each month (excluding January and August). Until further notice, all meetings are being held via Zoom. Please check the monthly meeting agendas on the Parish Council website for the login details. Everyone is welcome to attend these online meetings and all agendas and minutes can be accessed via www.naseby.org, including the parish notice board located on School Lane.

CONTACT US:

Josie Flavell

Clerk to Naseby Parish Council

E: clerk.nasebypc@outlook.com

T: 07471 134 931

Naseby News is our very own village newsletter paid for by Naseby Parish Council. All contributions of interesting village news, are gratefully received and thank you to those who provided articles for this edition.

It costs as little as £7.50 to advertise your business. All funds received from advertising will go towards printing costs.

Contact Josie Flavell, Parish Clerk, for more details

tel: **07471 134931** or email:

clerk.nasebypc@outlook.com

MEMBERS OF NASEBY PC

Paul Reedman

Chairman

Street Lighting

Steve Howat

Vice Chairman

Highways Rep.

Lyn Dyett

Defibrillator

Village Hall Rep.

Rachael Johnston

Neighbourhood Watch

Police Liaison Officer

Mowing Warden

Stephen Davies

Speed Signs

Play Area

David Hall

Noticeboards

Play Area

Josie Flavell

Clerk/RFO

Newsletter

Welcome Booklet

A big **THANK YOU** goes out to **Liz Capell** and her helpers for delivering the 'Naseby News'. If you are able to help our volunteer delivery team please contact the Parish Clerk.



APRIL 2021



WHAT'S INSIDE:

- West Northamptonshire Council Information
- Elections – Parish and County
- Benches
- Village Hall Committee
- Litter
- Kelmarsh Windfarm Community Benefit
- Chairman's Report 2020/21
- Naseby WI
- Naseby Dog Mess
- Litter Picking
- Naseby Good Neighbours
- All Saints Church
- Age UK
- Compass Energy Fund
- 59-60 Buses
- Anglian Water
- Naseby Village Facebook Page
- Sunflower Competition
- Adverts



HEADLINE

Springtime has officially sprung with the changing of the clocks. However, who would have thought that we would have only just started to come out of lockdown again, this time last year!

We do so hope that this newsletter finds you all well and ready and raring to go!

As you will all be aware, the Government have put into place a 4 step programme, which takes us to the 21st June. However, clubs, events etc., are starting to start up again and by the end of May, more and more places and events will be available for you to enjoy. So, please do read this newsletter thoroughly to see what opportunities there are available within the community to start enjoying yourselves outside of your homes again.

Please continue to stay safe!

CHAIRMANS REPORT 2020/21



COUNCILLORS

We have 8 seats, but we have been running with only 6 or 7 councillors during the year. Two councillors stepped down, Phil Carter (October) and Penny Nicholson (December) and two new councillors were co-opted in December.

Our current Councillors are Paul Reedman, Steve Howat, Lyn Dyett, Rachael Johnson, Stephen Davies plus new councillors David Hall and Carmen Di Trana.

We all lose our seats and will be subject to elections in May 2021 and we hope to get back to our full complement of councillors.

Thanks to all Councillors for their work in the last year but particularly to Steve Howat as Vice Chairman and to Phil Carter and Penny Nicholson for their substantial contributions.

MEETINGS

In the year we have had 10 normal plus one additional meeting and a finance committee meeting.

With the enforced closure of the Village Hall due to a Covid 19, It's amazing how we adapted to the use of Zoom technology holding all of our meetings remotely. The downside is that very few members of the public have attended.

Unfortunately, the Annual Meeting of the Parish which involves residents, clubs and village organisations could not take place.

PLANNING APPLICATIONS

There seems to have been a reduction in activity with no major applications during the year and 8 minor applications of various types which have been examined and commented upon.

COMMUNITY INFRASTRUCTURE LEVY

We received no additional Community Infrastructure Levy (CIL) contributions this year and currently retain £4,850.

GRANTS

The only Parish Council Grant awarded during 2020/21 has been £400 to the Battlefields Trust, to assist in renewing two illustrative visitor boards within the parish, at the Fairfax Viewing Platform and by the Fitzgerald Arms.

PLAY AREA

In the autumn land drains were installed, extending across the rear of the village hall and through the play area to connect to a ditch at the side of Haselbech Road. These have worked really well allowing the play area to continue in use throughout the very wet winter months. The cost was shared equally between the parish council and the Kelmarsch Wind Community Benefit Charity who awarded a grant via the Friends of Naseby Play Area.

The wooden fence fronting the car park was replaced with coloured steel railings to match the rear railings. The self closing gates should ensure that the play area is secure from dogs.

Although the play area had to be closed for a short period due to government Covid instructions, it has been very pleasing to see just how well used it has been, providing an outlet for play and exercise when everything else was restricted.

Thanks to the team of councillors who carry out a weekly inspection of the play area.

GRASS CUTTING

2020 was the first year of 3 year contracts for our two grass cutting contracts. Maximow continued cutting the village hall playing field and Countrywide Grounds Maintenance continued to cut road verges, the churchyard, the play area, the area adjacent to the car park, the public open space adjacent to Hammonds Mews and the paths from High Street alongside the allotments and between the village hall and Cottesbrooke Road.

BUSES

Buses operated by UNO provided a 60 service from Naseby to Northampton and 59 service to Market Harborough.

From April to July services operated from Monday to Friday in each direction but from July the Northampton service operated only on Monday, Wednesday and Thursday with the Market Harborough service operating only on Tuesday and Friday.

Parish Councils along the routes funded approximately £15,000 of the annual cost with the balance provided by Northamptonshire County Council and Government grant. Naseby's contribution was £1,922.

Due to Covid 19 restrictions, passenger numbers have been heavily reduced, but buses have continued to run. Hopefully, numbers will increase as restrictions are eased and resident confidence returns.

KELMARSH WIND COMMUNITY BENEFIT

The charity has 8 trustees who are nominated by their respective villages and serve for a period of 3 years. There are two each from the qualifying parishes of Kelmarsh, Haselbech, Clipston and Naseby.

Paul Kelly, one of Naseby's initial trustees stepped down in spring 2020 and was replaced by Richard Nicholson. Our other initial trustee, Scott Westaway completed 3 years in March 2021. The parish council will nominate a trustee in April.

Many thanks to and Paul and Scott, and in particular for their substantial input into the drafting of trust documentation, negotiations with the wind farm operator and gaining sign off from the Charity Commission. The first grants were issued in early 2019.

PRECEPT 2021/22

The parish council precept has increased from £31,000 in 2020/21 to £31,500 for 2021/22.

VILLAGE HALL

A new committee and trustees have been installed with Chris Bignell as Chairman. The committee is operating under the new Charitable Incorporated Charity (CIO) which was put in place during 2019 by the previous committee.

One early improvement has been the installation of sound insulation panels in the main hall which should greatly improve the quality of sound at future events.

Corona Virus forced the closure of the hall shortly after the new committee took office and all activities came to a grinding halt. Hopefully, they will restart in the summer.

The title to the land comprising the playing field, hall, car park, sports court and play area which was previously held by the Parish Council as custodian trustee has been transferred to the CIO.

It has been noticeable during my daily exercise walk, just how valuable the playing field has been to the village during this lockdown year. The number of people using it for exercise or recreation during the summer and autumn was amazing.

Many new saplings have been planted by village hall volunteers during the winter which will change the field for the better in the future.

LOCAL GOVERNMENT REORGANISATION

West Northamptonshire Council becomes fully operational on the 1st April and its 93 councillors will be elected in the May elections, including 3 for our local Brixworth ward.

The new unitary council will evolve over the coming years amalgamating the previous district and county functions. There will be some quick wins but other areas will take a considerable time to rationalise.

There will inevitably be some impact on parish councils.

VOLUNTEERS

Many thanks to

- Geoff Capell for moving and maintaining the speed information display unit.
- Ian Watson and Roger Clark for the weekly defibrillator inspections.
- Margaret Anderson for organising the Xmas tree event and for her Village Pride work which has now come to an end.
- Sarah Farrell and the team who delivered Naseby News. Sarah has now handed over the reins to Liz Capell.
- the Naseby Good Neighbours Group for arranging help, support and assistance for families adversely affected by Covid restrictions including loss of employment. They were successful in obtaining grants from the Kelmarsh Wind Farm Community Benefit Charity and Western Power Distribution which enabled hampers and supplies to be distributed.

PARISH CLERK

Many thanks to our clerk Josie Flavell for her sound advice and who has coped seemingly effortlessly organising our online meetings.

Paul Reedman
Chairman to Naseby Parish Council
31st March 2021

PARISH COUNCIL MEETINGS

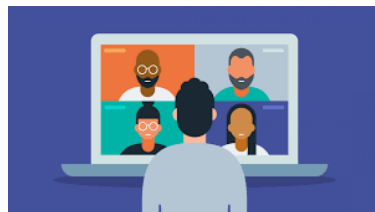
Throughout the pandemic, Council has successfully managed to hold all its meetings using Zoom, with agendas and minutes being posted both on the council's website and on the Parish Council notice board in School Lane. However, due to impending legislative changes, this may well change when the emergency power put into place to allow remote meetings, ceases on 7th May.

At present, we are unsure as to whether Council will be able to continue to hold remote meetings lawfully, so please keep checking the Parish Council website regularly for updates concerning this.

If Council, are able to continue to hold meetings remotely, the agendas will continue to contain the login details for the corresponding meeting.

All meetings start at 7pm and below is a list of all future meetings for the new council year:

- Thursday 20th May – Parish Council Annual Meeting
- Thursday 3rd June
- Thursday 1st July
- August – No meeting
- Thursday 2nd September
- Thursday 7th October
- Thursday 4th November
- Thursday 2nd December
- January – No meeting
- Thursday 3rd February 2022
- Thursday 3rd March 2022



Say hello to your new Council



**West
Northamptonshire
Council**

**Here for you
from 1 April 2021**



0300 126 7000
www.westnorthants.gov.uk

Please note: These new contact details will only be active from 1 April. Until then, please continue to contact your existing council.

Tel: 07471 134931 // clerk.nasebypc@outlook.com

Welcome to
**your new
council**



**West
Northamptonshire
Council**

On 1 April, Northamptonshire's County Council and its seven District and Borough councils will be replaced by the new West Northamptonshire Council and North Northamptonshire Council. From this date, West Northamptonshire will deliver public services to the residents and businesses previously served by Daventry, Northampton, South Northamptonshire and the County councils.

This change gives us a once-in-a-generation opportunity to create more modern and effective ways of delivering the vital services that our residents rely on. You will no longer need to go to different councils for

different things - and we will create significant savings and efficiencies by reducing duplication.

We are working hard to improve and enhance how you get what you need from us in the coming months and years. But you can trust that the services you rely on - such as waste and recycling collections, your libraries and leisure centres, social care and work on our roads - will continue to function as normal and without interruption.

West Northamptonshire has tremendous potential and everyone working at the new authority will be striving to make it an even better place to live, work and thrive.



West
Northamptonshire
Council

www.westnorthants.gov.uk

0300 126 7000

Please note: These new contact details will only be active from 1 April. Until then, please continue to contact your existing council.

Elections - Parish

NOTICE OF ELECTION

West Northamptonshire Council Election of Councillors for the Parish(es) listed below

Ward	Number of Councillors to be elected	Ward	Number of Councillors to be elected
Arthingworth	Seven	Kilsby	Eleven
Badby	Nine	Lampport	Seven
Barby and Onley	Eleven	Long Buckby, Long Buckby Ward	Thirteen
Boughton	Eleven	Long Buckby, Long Buckby Wharf Ward	One
Braunston	Twelve	Maidwell	Four
Brington	Eight	Moulton	Four
Brixworth	Fourteen	Naseby	Eight
Byfield	Nine	Newnham	Eight
Clipston	Eight	Norton	Eight
Crick	Eleven	Old	Eight
Daventry Town, Central Ward	Four	Pitsford	Nine
Daventry Town, East Ward	Four	Ravensthorpe, Ravensthorpe Ward	Seven
Daventry Town, North Ward	Four	Revensthorpe, Coton Ward	Two
Daventry Town, West Ward	Four	Scaldwell	Seven
Draughton	Three	Sibbertoft	Seven
East Farndon	Seven	Staverton	Eight
East Haddon	Nine	Stowe-Nine-Churches	Seven
Farthingstone	Five	Walgrave	Nine
Flore	Ten	Watford	Seven
Great Oxendon	Eight	Weedon Bec	Thirteen
Hannington	Seven	Welford	Ten
Harlestone Manor	Eight	Welton	Nine
Holcot	Eight	Whilton, Whilton Ward	Five
Hollowell, Hollowell Ward	Six	Whilton, Whilton Locks Ward	Two
Hollowell, Teeton Ward	Two		

- Nomination papers must be delivered to the Returning Officer, Civic Offices, Lodge Road, Daventry, Northants, NN11 4FP on any day after the date of this notice, on Monday to Friday 10 am to 5 pm (excluding bank holidays) but no later than 4 pm on Thursday, 8th April 2021.
- Nomination papers may be obtained from [Local elections in England | Electoral Commission](#), by emailing electoralservices.ddc@westnorthants.gov.uk or from the offices of the Returning Officer, Civic Offices, Lodge Road, Daventry, Northants, NN11 4FP, during the times stated above.
- If any election is contested the poll will take place on Thursday, 6th May 2021.
- Applications to register to vote must reach the Electoral Registration Officer by 12 midnight on Monday 19 April 2021. Applications can be made online: <https://www.gov.uk/register-to-vote>.
- Applications, amendments or cancellations of postal votes and amendments or cancellations of proxy votes must reach the Electoral Registration Officer at Civic Offices, Lodge Road, Daventry, Northants, NN11 4FP by 5 pm on Tuesday, 20th April 2021.
- New applications to vote by proxy at this election must reach the Electoral Registration Officer at Civic Offices, Lodge Road, Daventry, Northants, NN11 4FP by 5 pm on Tuesday, 27th April 2021.
- Applications to vote by emergency proxy at this election on the grounds of physical incapacity or for work/service reasons must reach the Electoral Registration Officer at Civic Offices, Lodge Road, Daventry, Northants, NN11 4FP by 5 pm on Thursday, 6th May 2021. The physical incapacity must have occurred after 5 pm on Tuesday, 27th April 2021. To apply on the grounds of work/service, the person must have become aware that they cannot go to the polling station in person after 5 pm on Tuesday, 27th April 2021.

Dated: Thursday 25th March 2021

Anna Earnshaw, Returning Officer

Printed and published by the Returning Officer, Civic Offices, Lodge Road, Daventry, Northants, NN11 4FP

WEST NORTHAMPTONSHIRE COUNCIL PLANNING



The formation of West Northamptonshire Council will potentially affect planning in Naseby in the medium to long term.

The three district councils which have been combined each had their own local plans covering their geographic areas which remain in force. For Naseby it is the Daventry Settlements and Countryside Local Plan (Part 2) which was adopted for Daventry District Council and covers the period up to 2029. This includes some housing development areas on the edge of Northampton which on the ground look like extensions to the town.

Under the current plan very limited development is possible within the Naseby settlement boundary which is drawn tightly around the built up areas of the village.

One of the requirements for all planning authorities is to maintain a 5 year supply of land which is readily available for housing development. Both Daventry and South Northampton Councils had historically been able to achieve this but Northampton Borough Council struggled.

Updated local plans will have to be produced by the new West Northamptonshire Council to take over from 2029 and it will be interesting to see how this develops.

- Will local plan areas follow current local plans or will boundaries be changed?
- How soon before developers challenge a shortfall in housing land in Northampton Town with arguments for the release of sites in rural areas?

It has already been decided to maintain three regional planning committees, one of which will be based on the Daventry District Council boundary which should retain local planning expertise.

There is also to be a single strategic planning committee covering the whole of the new council area. This follows on from the former council's strategic cooperation over many years maintaining a joint planning unit which looked at common ground between the councils. Much of the information it produced is found within the three current local plans.

Paul Reedman

THE DOG POO FAIRY

– are they real or just a myth?



Let's talk dog poo! "Yay" I hear you cry - not! There have been many reports and articles in the press of late indicating that dog fouling is on the increase in the UK – Naseby being included! Of course, the "poo problem" is nothing new, and the subject has long been a hot topic in the village for as many years as I have known.

So why is there more poo on our pavements, parks and allotments?

- More people are working from home due to lockdown.
- There are fewer exercise alternatives.
- A large number of people walking their dogs as part of their daily exercise (rather than letting them go in the garden).
- More dog owners than ever before.
- Dark/quiet streets facilitate an opportunity to not pick up.

We know almost all of the lovely residents of Naseby **are** responsible dog owners and pick up **every single time** after their dogs (even picking up after other people's dogs on occasions!). But sadly, there are those who (for whatever reason) just don't pick up and it is these people that give dog owners a bad name and spoil our beautiful village.

So what's the big deal you may ask?

1. **It's Dirty & Dangerous:** As well as being down right disgusting, dog mess is a health hazard to both dogs and humans. It can lead to Parvo, which is a potentially fatal to dogs plus it can lead to toxocariasis in humans, which can cause serious illness and even lead to blindness.

2. **It's the Law:** It is an offence if you do not remove any poo deposited by your dog. Dog walkers must also carry the means to pick up dog poo whilst on a walk (e.g. carry poo bags). If you don't do either of these things you can be presented with a £100 fixed penalty notice or a fine on conviction in court of up to £1,000.

So how bad can it be?

Recently some 15 tied bags of dog poo were found "deposited"



over the wall of our beloved Church plus one Naseby resident cut his hedge back recently and couldn't believe the amount of dog poo there was and that some of it was even in bags thrown into the hedge itself.

So what can you do?

1. **Pick up after your dog** – simples! That way everyone is a winner! But most importantly... Don't bag it and fling it - Bag it and **bin it!**
2. **Stick and Flick Countryside Method** – find a stick and flick it into the undergrowth (e.g. away from public footpaths and walkways).
3. **Report it:** You can report dog fouling to the newly formed West Northamptonshire Council by calling 0300 126 7000 or by visiting www.daventrydc.gov.uk/business/environmental-health/dog-fouling/

So what more could be done?

Naseby Parish Council gave permission for volunteers to go round the village spraying all the dog mess with some brightly-pink biodegradable paint under the “Pink Paint Means Poo” campaign. By doing this the hope is to highlight the sheer extent of dog fouling around the village and possibly shame dog owners into picking up after their pets. Carvells lane, the village hall grounds and the public footpath were the worst areas. We have also been spraying some “Clean it Up!” signs as a helpful little reminder to those in case they forget.

So remember: Please, please –

1. Always pick up after your beloved pooch and put it in the bin or flick into the undergrowth.
2. Maybe remind your kids if they are walking your cherished family pet to pick up after them each time — and put it in the bin.
3. Tied up bags of dog poo can be placed in any Dog Poo Bin, **ANY** public litter bin (**not** in the Naseby HQ bins though please) or in your own wheelie bin at home.

Thank yous: Huge thank you to Naseby Parish Council for supplying the bright pink paint and JT for making the amazing stencils by hand!

Naseby Volunteers



CHURCH YARD AND DOG POO BAGS

It really is very public spirited of you to pick up and bag your dog's mess, keeping the footpaths near the church clean. Thank you!

However, what is difficult to understand is why there are still some people who believe the appropriate place to get rid of the bag is to pop it over the wall into the church yard.

Please respect the families who tend their relative's graves and walk the short distance to the waste bin in front of the Fitzgerald Arms.

Margaret Diack
Church Warden



DEFIBRILLATOR NEWS

You may be aware that the Parish Council own and manage the village defibrillator which can be found at the Church.

For many years now, Ian Watson has very kindly volunteered by completing the weekly inspection checks and notifying council of any maintenance needs or replacement parts needed.

Unfortunately, due to circumstances outside of Ian's control he is having to step down from this role and hand over the job to someone else.

We need someone from the community to come forward to help with this task, which is not onerous, but very important!

If you feel you could spare 5 to 10 minutes each week in fulfilling this role, please contact the Parish Clerk in the first instance at clerk.nasebypc@outlook.com or 07471 134931.

In the meantime, we give Ian our sincere thanks for all that he has done over the years by fulfilling this role, it has been greatly appreciated.



GREAT BRITISH SPRING CLEAN

28th May to 13th June 2021

If you want to get involved, find out more info and to register the Keep Britain Tidy Campaign visit:
www.keepbritaintidy.org

Litter picking kits are available to borrow from Naseby Parish Council – contact them direct:
(Tel: 07766 248439)

Organised Litter Pick Around Naseby:

Sunday 6th June 10.30am meet at Naseby Village Hall (subject to Government Guidelines). To include the Battlefield Memorial, Obelisk and viewing platform.

AJ Green



**Join the
Great British
Spring Clean**

28TH MAY - 13TH JUNE 2021
#GBSpringClean

DID YOU KNOW THERE ARE 2 NASEBY FACEBOOK PAGES?



NASEBY VILLAGE

Simply search
'Naseby Village
Northamptonshire'



NASEBY HISTORY

Just search
'Naseby Village History
Northamptonshire'

THE VIEW FROM THE RIDGE: NASEBY 1645 (formerly Naseby Battlefield Project)

Woody Allen once said, "If you want to make God laugh, tell him your plans!" - the story for so many of us throughout this pandemic. In late 2019 Naseby Battlefield Project became Naseby 1645, and Trustees began working on a business plan to ensure we could continue to protect the battlefield and promote its importance in English history.

2020 got off to a good start with a successful exhibition at Daventry Museum that included items never seen before on public view. Enthusiasts and newcomers alike warmly received the displays, talks and tours, with visitor numbers exceeding expectations. Although the museum had to shut its doors before the closing date, parts of the exhibition can still be seen online.

<http://daventrymuseum.org.uk/whats-on/>

Naseby 1645 is proud to be one of only five organisations chosen from across the Midlands to be part of an Arts Council England programme to commission an artwork relating to the battlefield site. We can't wait to get started and look forward to working with the school, the local community and the church before sharing the work with the village. Look out for updates on the Naseby village Facebook page or via Twitter @BNaseby1645

Keeping the battlefield in good order and safe for the public to visit is an ongoing challenge. With support from Naseby Parish Council, Daventry District Council and Heritage England we are upgrading the interpretation signage on the battlefield, and funding from Kelmarsh Windfarm Community Benefit has allowed us to renew some of the viewing platforms and ensure disabled access at one of the most visited sites. We continue to look for financial support to provide breathing space and help bridge this uncertain period.

Sadly, the many fundraising events planned for 2020, including a 'march' on the Houses of Parliament on the 375th anniversary of the battle, were abruptly cancelled. By custom we usually host an event around the anniversary of the Battle on June 14, and later in the year to coincide with the August Bank Holiday. We are looking at what might be possible in 2021, given current uncertainties around when and how the lockdown will ease and/or end. We are really keen to involve locals in our celebrations and as soon as possible, we will look at offering a free tour of the battlefield to villagers with one of our expert guides, on a first come, first serve basis. Watch this space!

NASEBY VILLAGE BAND ...and the Band Played On!



Naseby Wind Band began in 2013 with a handful of players, we're now 21 strong, with flutes, clarinets, oboe, saxophones, tubas, trombone and trumpets. Many are relative beginners, others blowing years of dust from forgotten instruments.

Before Covid, we practiced every week. Not being able to play together has been hard. It's not just about sharing music, it's also the benefits of being together and having fun.

Not to let Corona get the better of us, we played on. We've done nine socially distanced performances, with more in progress.

4,000 people so far have seen the band play on YouTube!



In July '20 we were joined for our performance of 'We'll Meet Again' by D-Day Darling Emily Jane-Brookes.

To see our performances go to YouTube and search for Naseby Village Band.

When the band can meet again we rehearse every Thursday, 6pm to 7:30pm at Naseby Village Hall.

Currently we're particularly looking for Trombone, French Horn or Percussion but **we welcome any new members.**

Interested in joining us?

Contact Brian Packham, Musical Director: **07713 106926**

NASEBY SUNFLOWER PROJECT

Having seen this in other villages I thought I'd try get it going in Naseby and see if we can fill the village with Sunflowers!



How to take part:

1. **Collect your FREE seeds:** I have left lots of envelopes behind the counter at Naseby HQ with a couple of Sunflower seeds in each.
2. **Plant them somewhere so we can see them:** plant them in your front garden or somewhere we can all see them when we walk around the village once they have grown (can be in the ground, a pot or container).
3. **Remember to water them:** make sure they are watered regularly.
4. **Support them:** the only thing you may need are some garden canes to help support them as they grow - the varieties supplied can grow up to 4 metres tall! Planting instructions will be included with each envelope.

Rules and Notes:

- **No age limit:** This isn't just for the kids—all are very welcome to take part, in fact the more the merrier.
- **Easy to Grow:** These varieties are easy to grow and can be planted straight into the ground anytime from now up until mid-June.
- **Use your own sunflower seeds:** There are so many shapes, sizes and colours of sunflower seeds so you don't have to just use these particular varieties, you can plant your own if you prefer. All sunflowers are welcome.
- **Great for nature:** Not only will these look amazing and bring a smile to all our faces, they will also encourage lots of wildlife into your garden—especially bees and butterflies.
- **Lots of Seeds:** There are 500 seeds in total so hopefully we can spread some sunshine round the whole village so get involved.

We could even have a competition of who can grow the tallest sunflower!

You can collect your seeds at any time from Naseby HQ during opening hours, just ask Suthan or his lovely staff for them - they are completely **FREE!** If you would like more than one envelope (there are 5 seeds in each one) then just ask but please don't take more than you need so there is enough to go round.

Happy planting! And Thank you Suthan for taking the seeds in for me.

AJ Green



59/60 BUS SERVICE UPDATE

Negotiations have been concluded to continue the no. 60 shopping bus service to Northampton, and the no. 59 service to Market Harborough for the year commencing on the 1st April.

Parishes along the routes have agreed to contribute around £14,000 with the new West Northamptonshire Council and Government grant covering other costs. Naseby's contribution will be £1,604.

Buses provide a way for residents without access to a car to get out of the village, to meet and shop without the need to obligate others. Bus passes are accepted.

There will be a variation in the route towards Northampton which will now travel along the A5199 as far as Spratton then via Brixworth to enter Northampton along the A508.



AGE UK – APRIL 2021

As I write, our Covid restrictions are gradually being reduced, and Spring is definitely in the air. I hope you are all feeling a lot better now that the long dreary winter is over. I feel sorry that I haven't been able to visit anyone in person for a long time but hope that you know that I am only a phone call away if you need any help.

I am sure you will agree that we have been fortunate to live in such a lovely village. We were very pleased to have so many Volunteers on the village pop-up Good Neighbours scheme. I hope this helped people feel supported through this very difficult time. I know some of you have felt rather isolated, but what I would like to reiterate is, please don't suffer in silence. If you are anxious about anything at all please do call me and I will endeavour to help where I can, or to put you in touch with someone who can help.

I do hope that you will soon be able to re-join your groups or attend village events. If anyone has any ideas about how we can socialise, again please talk to me.

I am aware that there have been a variety of scams doing the rounds, I can't believe how callous these people can be. Please be vigilant and stay safe!

Liz Capell 740568

lizziecapell@hotmail.co.uk



SAXON SPIRES PATIENT PARTICIPATION GROUP



Saxon Spires Virtual Carers Drop-In

The SSPPG is working with the Practice and Northamptonshire Carers to offer a Virtual Carers Drop-In session on Zoom.

The past few months have been a difficult and lonely time for carers. Carers past and present, join together for a chat, relaxation exercises and quizzes at the fortnightly gatherings. They will be held on the first and third Tuesday each month 1.30pm - 2.30pm. To join the meeting, contact Kay Giles at Northamptonshire Carers on 01933 677907 for log-in details.

SSPPG Meetings

The bimonthly SSPPG Meetings are now being held on Zoom. The next meeting will be in June. New members are always welcome. If you are interested in supporting the work of the Practice and would like to join the meeting, please contact the Secretary.

For more information about the SSPPG contact the Secretary, Barbara Hogg on 01604 880552 or email hoggbc66@gmail.com

There is more information about our meetings and events, on the Saxon Spires website.

WHIPPING CROSS

Proposed Repairs to Naseby Whipping Cross

The Whipping Cross is listed under the Planning (Listed Buildings and Conservation Areas) Act 1990 as amended for its special architectural or historic interest.

The Grade II listed Whipping Cross in Naseby is located at the junction of Church Street and Gynwell, outside the Methodist Chapel in Naseby (National Grid Reference: SP6878477959).

There is a now a need to carry out essential remedial works to secure the long term future of this historic monument.

A brief history of the Whipping Cross at Naseby

The Grade II Listed Whipping Cross was constructed during the 15th century out of limestone and comprises a round shaft set into a square plinth. There is no evidence of securing points, so it is not clear if it was utilised as a whipping post. It is thought to have been from the old market cross (see Plate 1).



Plate 1: Naseby About 1790 is depicted in this engraving by Samuel Ireland. It shows the spring from which the River Avon rises (now in the garden of Manor Farm), the Parish Church and the medieval marketplace and market cross (whipping cross) in Newland.



In 1203 or 1204 Roger de Lacey secured for his newly acquired manor a charter granting Naseby a weekly market. It was around this time the street called Newland was laid out and a market cross opposite the north door of the church erected. Naseby remained a market town for around 150 – 200 years, and the shaft of the last market cross forms part of the whipping cross that stands in Naseby today.

The cross was moved from its historic position opposite the church, in c1820 to a new position at the junction of Newlands with Haslebech and Clipston roads (see Plate 2).

Plate 2: A view of the cross at the junction of Newlands with Haslebech and Clipston roads. Notice how worn the grooves at the base are from 100's of years of people kneeling in them to be whipped.

In 1993, the Whipping cross was re-sited to its current position at the junction of Church Street and Gynwell, outside the Methodist Chapel (see Plate 3).



Plate 3: Photograph of the Whipping Cross taken in 2021.

Plate 4. A plaque nearby calls it the 'Market Cross,' and says that 'over time it was reduced to a stump.'



WHIPPING CROSS

Proposed Works

The plinth is probably circa 1993 and is in a limestone. A number of these stones have started to delaminate and are crumbling. The bedding mortar is a form of Engineered Cementitious Composite (ECC) and this is a contributory factor in causing the lower stones to fail.

It is proposed to remove the delaminated stones from the top two courses of the Whipping Cross and replace with an approved Clipsham Top bed limestone. This will involve twelve or thirteen new stones being provided.

The remedial work requires listed building approval by Daventry District Council, and an application is being prepared by the Parish Council to seek

The works are likely to be carried out in early summer 2021 (subject to planning consent).

Article by: Cllr Stephen Davies

References

Greenhall, R. L. (1974), Naseby A Parish History. University of Leicester.

VILLAGE HALL PLAYING FIELD BENCHES

During the coming year, the Parish Council intend to install two or three benches around the playing field.

These will provide places to simply stop and rest or could be a place for a picnic.



WALKING IN NORTHAMPTONSHIRE

Are you fed-up with doing the same old walks?

Walking in Northamptonshire

www.walkinginengland.co.uk/northants is the website for you!

With hundreds of walks to download and print, free, it also has books of walks, contact details for all the walking groups in the county and much more. Whether you want to walk on your own or with a group all the information is there in one place.

John said 'There is so much walking information on the web but it is difficult to find. Walking in Northamptonshire (part of the Walking in England suite of websites (www.walkinginengland.co.uk) – one for each county in England) has brought it together in one place so whether you are walking from home, or away on holiday, you will be able to find a walk suitable for you'.

With walks from half a mile to twelve miles plus long, and a note of suitability for pushchairs and wheelchairs, everyone can find a walk to enjoy.

So, home or away, check out the websites and get walking!

John Harris www.walkinginengland.co.uk email:

john@walkinginengland.co.uk



NASEBY WOMEN'S INSTITUTE INTERIM SPRING/SUMMER PROGRAMME 2021



Meetings are 'normally' held in Naseby Methodist Chapel at 7.30pm
on the second Thursday of each month

April 8th 'ZOOM' Meeting

ANNUAL GENERAL MEETING

The Life and Influence of Queen Eleanor

Speaker: Andrew Tennet

A talk on the Queen Eleanor's links with Northampton and her impact on many things in our everyday lives

May 13th 'ZOOM' Meeting

Fabulous Fabric Shoe Makeovers

Speaker: Lucy May

Did you know you can create your own designer footwear by recovering and embellishing an existing pair?

May 20th 'Open House', further details to come!!

June 10th 'ZOOM' or live meeting

Speaker: Paul Howard

The Story Behind the Newspaper Story

What led to funny, serious and touching stories and photographs that went to print in a local and national Newspaper

July 8th 'ZOOM' or live meeting

The History of the National Garden Scheme (NGS)

Speaker: Judi Beaudoin

This talk is about the NGS and its links with District Nursing

August 12th Social Event, to be arranged!!

Other Activities:

Walking Group: Monday and Wednesday afternoons

Book Club: Thursdays once per month

New members always welcome, please contact Angela Carter (President)
angelajcarter@live.com if you would like to join.

CLEAN UP OUR VILLAGE



Charlie Darker and James Andrew both 14 are currently working toward their Bronze level D of E.

There are 4 elements to this; Physical, Skill, Volunteering and Expedition. For the Volunteering section the boys have opted to offer their services to the Environment and as such are helping to clean up our Village. They approached the Parish Council and Paul Reedman agreed to be the boys assessor and also gave them a list of potential jobs. The first is to clean the 58 signs in the Village. They have received so many positive comments whilst out and about sign cleaning so if you see them please give them a hoot or a wave!

For the other levels the boys are doing running and cooking and the Expedition will be next year. If you see any jobs that the village would benefit from the boys doing then please email Charlie: darker_charlie@yahoo.com. They will be doing this until the beginning of June.



WATER PRESSURE



Anglian Water were challenged year ago over the fairly frequent loss of water pressure which occurs to varying degrees around the main village. The response received was considered unsatisfactory.

Further incidents of low pressure have since occurred and are now recorded in parish council meeting minutes. Nearly all incidents seem to result from breaks or leaks on water pipes to the north of the village, along the Sibbertoft Road.

A further letter requesting that that situation be improved has been sent to the Chief Executive. Officer of Anglian Water and a response is awaited.

If you experience low pressure and you can do so please report it to Anglian Water. Your water bill has details of an emergency free phone no of 03457 145 145.

You could also put something on the Naseby Facebook page so that the Parish Council can pick it up.

NASEBY PRIMARY SCHOOL NEWS

I am sure everyone in Naseby will be sad to hear that our Head of School, Mrs Beverley Thornton, is retiring at the end of this school year.

Mrs Thornton has been at the school as teacher and then Head for nineteen years and has taught many village children and got to know many families in that time.

I have come to value greatly Bev's positive attitude, caring and compassionate outlook and deep faith in my time as a Governor, and I know she will be very much missed by staff, Governors, parents, pupils and ex-pupils alike.

Because of the current restrictions I cannot tell you exactly how we will be celebrating Bev's wonderful achievements at school but be assured we will be marking this important occasion in July, and I will keep everyone updated. Please look out for information via the Naseby Village Facebook page and school newsletters.

I am incredibly pleased to tell you that after a lengthy and thorough process we have recruited a new Head of Naseby School, Mrs Louise Cook, who will start at the beginning of September 2021. Mrs Cook has worked extensively in schools in Leicestershire and Rutland and is looking forward to meeting all our children and staff very soon. I am sure everyone will join in welcoming Mrs Cook when she starts her new job.

May I also introduce two new Governors: Mrs Kate Helm, our additional Foundation Governor, who is a retired primary teacher and experienced Governor and our Staff Governor, Ms Hannah East, who teaches Class 1. We are looking forward to working together to support our Head and give our children at Naseby School the very best educational experience we can.

The past year has been exceptionally difficult for children, families, and staff, and I know how happy everyone is to be back in school, working hard and being part of our Naseby school "family".

I would like to thank all our parents for helping the children whilst they were taught virtually and for all the support they have given staff and Governors. Seeing the children return to school made me realise how much they, and I, had missed the everyday joy of being at school.

Jasmin Schelts

Chair of Governors, Naseby Church of England Academy Trust

FITZGERALD CAR PARK

The car parking area in front of the Fitzgerald Arms was until recently, part of the public highway maintained by the County Council. It was a very low priority and was seldom maintained.

Following a legal process which was advertised and posted on notices, the car park is no longer public highway and is owned exclusively by the pub.

The owner Alan Wilkins has kindly agreed to allow short term parking to continue outside of normal pub opening hours. This could be associated with a visit to the shop or dropping off or picking up children from the village school.

This is a very generous offer, so please do not abuse it.



NASEBY VILLAGE HALL & RECREATIONAL GROUND

The village hall will reopen from April 12th for individual or household group activities, plus some other activities providing numbers are limited and social distancing and other COVID restrictions are adhered too. If you wish to make a booking, please check the government roadmap to confirm your activity is allowed under stage 2, then go to booking page on the village hall website.

Stage 3 of the roadmap, currently scheduled for May 17th will allow reopening to all groups, again subject to any social distancing and mask wearing regulations still in force. Full reopening will take place on June 21st subject to the government roadmap being on track.

We are hoping to stage a village event on Saturday 17th July. It is likely to be an open-air event on the recreation ground and is planned as a celebration of life returning to something like normal. We would like to involve all village groups, clubs, societies, and individuals to help in the planning and running of this event and would ask you to contact Chris Bignell on 07817441948 or chrisbignell3260@gmail.com to register your interest in helping.

The all-weather sports court is currently underutilised. Welford junior hockey train on it on Sunday mornings but no other sports clubs use the facility. Do you belong to a sports club or group? Would you like to play tennis, junior tennis, 5 a side, netball, hockey or any other sports? If so, please contact Patrick on 07726789937 who is trying to organise sporting groups to use this great facility.

The main hall is suitable for a wide range of events. With new acoustic tiles in place, it is great space for parties, music, spoken word events, meetings and much, much more. We have Gigaclear WiFi and the upstairs meeting room is an ideal location for business meeting of all kinds, with overhead projector and screen installed for presentations. Please contact Chris on 07817441948 to discuss your requirements.

Chris Bignell

To keep up to date with events at the village hall please follow us on:



[nasebyvillagehall](#)



[@yourvillagehall](#)



[nasebyvillagehall](#)

Contact details for your village hall are as follows

General enquiries, nasebyvillagehall@gmail.com or 07817 441948 Bookings, nasebyhallbookings@gmail.com or 0844 504 1905

NASEBY GOOD NEIGHBOURS



Naseby Good Neighbours

Dare we hope that we're nearing the end of the coronavirus crisis? Or at least the beginning of the end? Maybe, if we keep our fingers crossed...

The Good Neighbours team would like to thank all our volunteers for helping friends and neighbours and making a difficult time a little easier. We would also like to thank the Kelmarsh Windfarm Community Benefit and Western Power Distribution for their extremely generous grants. All this support enabled us to help local residents with:

- monthly prescription collections;
- heaters when they ran out of oil;
- vouchers for food and gifts over Christmas;
- befriending phone calls;
- lifts to vaccination centres;
- thank you gifts for healthcare workers.

We're intending to keep the Good Neighbours initiative going in the background of daily village life and would be interested to hear what you think we could do to help local people. Our recent consultation indicated that respondents would be happy for us to offer practical help to other villages when necessary, and suggested the following for residents:

- IT support for online shopping / zoom calls;
- a listening ear;
- walking buddies;
- phone calls to keep people connected.
- a book club or sit and sew club (these already exist in non-covid times);
- hampers of food and gifts;
- shopping / prescription collections;

Can you think of anything else?

We do offer all the above through Good Neighbours but have had relatively few requests for help. We hope that this is because people are generally managing ok BUT - if you would like help, or company, or are struggling in any way at all, do let us know and we will work out a way to make things a little easier for you.

If you have registered as a volunteer, and your life is becoming busier as restrictions ease, we can easily take your name off the list - simply email goodneighbours.nasebypc@gmail.com. Or, if you would like to be added to the list, please send your name, address, telephone number and a summary of the things you'd be happy to help with to the same email address. With thanks again.

Liz Capell, 16 Nutcote

01604 740568

Penny Nicholson, 17 Newlands

goodneighbours.nasebypc@gmail.com

Felicity Ryan, Aysgarth, High Street

07759 076161

Chris Bignell, Squirrels' Run, 24 Nutcote

01604 743009

ALL SAINTS CHURCH

Dear Friends,

If you were able to recall and, perhaps, relive the event of Holy Week, what a moving journey you will have made - but what joy you will have experienced on Easter Day! God has overcome betrayal, injustice and death, and risen again to new life. Not new life for his own benefit, but for ours.

For it is that same new life that is offered to each and every one of us. Each of us is a child of God, each of us a unique creation made in his image, each of us known and unconditionally loved by him.

How deep the Father's love for us: Jesus travelled a dark, lonely and infinitely painful path to demonstrate the depth of that love – he was betrayed and let down by his closest friends; even Peter, the rock, denied that he knew him, and left him to his fate. What kind of a rock was that on which to build his church?

The only kind there is.

Fallible, fearful, unreliable; all those words could be used to describe Peter – and he knew it all too well. But Peter believed there was a better version of himself to be revealed, a version that had been obscured by the culture, the society, the world he lived in. He wanted to step out of those shadows, to be more like Jesus, but he knew that he couldn't do it in his own strength, knew that he needed the power of God's love to overcome the worldly powers around him: powers that created injustice, inequality and violence. That recognition of his own weakness was enough for God.

Like Peter we are weak and easily swayed by others. Like Peter, we need God to enable us to step out of the shadows created by a world that has turned away from him. Like Peter, we need God in order to be truly ourselves.

There is real joy in knowing that God's love is freely given, unlimited and undefeated by death. If we embrace that knowledge, then as we step from old to new, from death to life, our lives will be transformed.

The way in which we live out our lives has a significant impact not just on ourselves but on those around us. Clearly, teachers have a huge responsibility in that respect. How fortunate we have been to have such a wonderful example of lived out love in our Headteacher, Mrs. Thornton; how much the whole school has benefited from her Christian example. She has shown infinite care for the children and staff and will be hugely missed. It has been a privilege to work with her.

With my love and prayers for you all,

Miranda

The Revd Canon Miranda Hayes

***The Naseby Group of Parishes: Clipston, Haselbech, Kelmarsh, Marston
Trussell, Naseby, Sibbertoft and Welford***

COMPASS ENERGY – COMMUNITY FUNDRAISING OPPORTUNITY

A fantastic community fund raising opportunity has arisen, at no extra cost!

Compass Energy is a new oil supply company started by Tony Watson (Formerly Watson Fuels) and helped by Trevor Reay (also from Watson Fuels). They plan to run the company on good old-fashioned traditions of reliability, honest pricing, and prompt deliveries - see the advert on the next page. By the community forming its own village buying group with Compass Energy, we can save money and the village will benefit financially, as Compass Energy will donate money (£50 for every 10,000 litres) to the Parish Council for the sole use of the community.

If you decide to join this scheme, you are not tied into Compass Energy to buy your fuel. All you have to do, is ring up and ask for a price, if the price is right then you can buy your oil from them.

Remember to ask them to register your account under the **NASE** group code, so that all funds go directly to the village.

The fuel amounts will be monitored by Compass Energy and the money for the village will be registered and forward to the Parish Council to be ring-fenced for community activities, needs etc. This is a fantastic opportunity for the village, so please do please give it a try.

To get involved, please contact Compass Energy on 01604 345526 or Trevor Reay on 07702867349.

ADVERTISEMENTS

COMPASS ENERGY

Delivering fuel to homes in your area.

Trevor Reay

From 1983 Trevor has worked alongside Tony Watson developing an oil distributor in the area.

After a change of ownership Trevor left the company in May 2018.

Trevor has now teamed up with Compass Energy to once again provide a reliable personal service.

Our chairman, Tony Watson has clearly defined our values.

SERVICE – TEAMWORK- SAFETY

Why Choose Compass Energy?

- ✓ No Brokers – price savings go direct to you.
- ✓ Competitive pricing.
- ✓ Reliable personal service you can trust.
- ✓ Our own fleet of Tankers permitting a rapid response for urgent deliveries.
- ✓ Years of industry knowledge and experience.

Call Trevor to obtain a quote or place an order.

01604 345526 | 07702867349

Visit our website for more information
compassenergy.co.uk



ADVERTISEMENTS

Naseby Allotments

There are vacant plots at the village allotments. If interested, please contact the Church Warden on 01604 743820.



NORTHAMPTONSHIRE
— SCHOOL OF —
DANCE

Pilates by
Natalie



NORTHAMPTONSHIRE SCHOOL OF DANCE is very proud to announce that our new Naseby Studios are now open!

We welcome children from the age of 2½ years to join our happy & thriving dance school, where we aim to give all our students and their families the very best dance experience.

Our dedicated team of teachers offer weekly classes in
Ballet, Tap, Commercial Street, Contemporary and PBT

We also teach weekly Adult classes in

Pilates, Yoga, Ballroom & Latin Dancing, Ballet, Tap, Contemporary and Street Dance

Please look at our websites:

www.northamptonshiredance.co.uk and www.pilatesbynatalie.co.uk

or contact us to enquire about Taster Classes at

admin@northamptonshiredance.co.uk / 07894 593397

THE BEST FUN
THEY WILL HAVE
ALL WEEK!

SESSIONS ARE
OPEN TO 2-11
YEAR OLDS



FABLES

Bringing stories to life through drama

Fables is a small and friendly drama group where learning and fun go hand in hand. Through a variety of drama based games, activities and performances, children will learn about classic and new stories while boosting their confidence, co-operation, concentration and communication skills.

CONFIDENCE CONCENTRATION COMMUNICATION COOPERATION

Where & When?

Naseby Village Hall NN6 6DE

Fables Preschool Group (2-4 year olds)

Monday 2-2:50pm

What's it all about?

A different story each week with lots of dramatic fun and games.

Through Fables, each child will have the opportunity to take part in a variety of performances and workshops, specially written with each child in mind.

Fables Junior (4-11 year olds)

Monday 4-4:50pm

Perfect for everyone who loves to act and perform

Fables harnesses the power of drama to create a vibrant imagination where stories become extraordinary adventures.



For more information,
please email
Rachel@fablesdrama.com

Taught by a fully qualified, experienced and DBS checked teacher of English and Drama.

 /fablesdrama

WWW.FABLESDRAMA.COM

NASEBY'S WHATSAPP GROUPS



Naseby Village: great for asking for help, appeals, support, lost/found, donating or selling items, recommendations plus village or local events.



Neighbourhood Watch: purely for alerts about village or local crime, concerns, scams or suspicious activity.

GROUP RULES: Be kind and respectful. No bullying, politics, spam or controversial posts. Take conversations outside the group.

Text: 07739 435744 stating which group you would like to join

HOUSEHOLD WASTE RECYCLING CENTRES

MARKET HARBOROUGH

Opening hours:

Monday	9am to 5pm
Tuesday	9am to 5pm
Wednesday	9am to 5pm
Thursday	Closed
Friday	Closed
Saturday	9am to 5pm
Sunday	9am to 5pm

Address: Riverside, Market Harboro, Leic, LE16 7PT (*8 miles away*)

Appointment needed—Vehicles are only allowed access to the site with a pre-booked online appointment:

www.leicestershire.gov.uk/popular-now/book-a-waste-site-appointment

BRIXWORTH

Opening hours:

Monday	10am to 6pm
Tuesday	Closed
Wednesday	Closed
Thursday	10am to 6pm
Friday	10am to 6pm
Saturday	10am to 6pm
Sunday	10am to 6pm

Address: Scaldwell Rd, Brixworth, Northants, NN6 9YE (*8 miles away*)

No appointment needed—site may close temporarily during the day to disperse queuing traffic obstructing the approach roads. Vehicles may be asked to return at a later time.



NASBEY HQ

Opening hours:

Monday	7am–7.30pm
Tuesday	7am–7.30pm
Wednesday	7am–7.30pm
Thursday	7am–7.30pm
Friday	7am–7.30pm
Saturday	7am–7.30pm
Sunday	9am–3pm